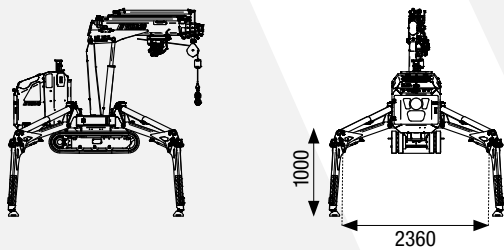
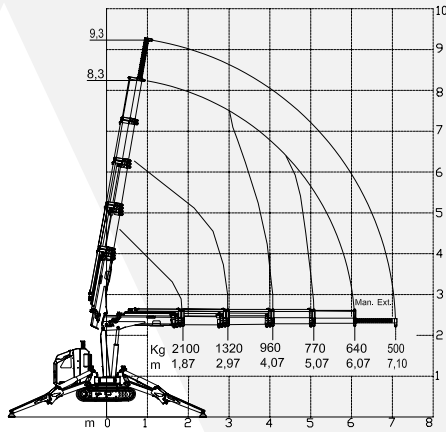


Self-loading dimensions

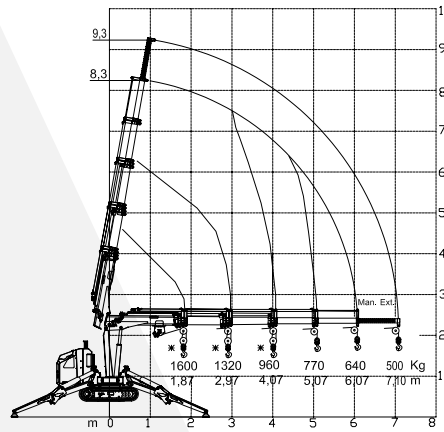


TECHNICAL DATA		STD	E
A	m		0,79
B	m		2,54
C	m		1,09
D	m		1,25
E	m		0,98
H	m		1,93
a1	°		25°
a2	°		-
X	m	max 4,70	min 3,7
Y	m	max 4,66	min 3,7
X1	m	max 5,55	min 4,4
Y1	m		0,62
Y2	m	max 6,30	min 5,0
Max moment crane	Tm		4,0
Max horizontal outreach	m		6,1
Maximum load capacity	kg		2100
Crane boom working angle	°		± 80
Rotation angle of the crane arm	°		340°
Rotation speed	kNm		3,2
Travel speed	km/h		2,1
Max slope capability	°		25°
Maximum working pressure	bar		200
Max pressure at the distributor	l/min		8
Hydraulic oil tank capacity	l		22
Single line winch (optional)	kg rope		800 Ø7mm - 46m
WEIGHTS		STD	E
Standard machine weight	kg	1650	1680
Winch kit weight	kg	70	70
Ground pressure on tracks	kg/cm ²	0,37	0,38
Max load on stabilizer foot	kg		1700
ENGINE OPTIONS		STD	E
Petrol engine	8,7kW/11,7HP @3600 rpm	•	-
Electric motor 230Vac (optional)	2,2kW/3HP 230Vac/50Hz	•	-
Electric motor traction	3,5kW/5HP 48Vdc	-	•
Crane electric motor	2,5kW/3,5HP 48Vdc	-	•
Battery characteristics	51,2Vdc 105Ah Lithium Ion	-	•

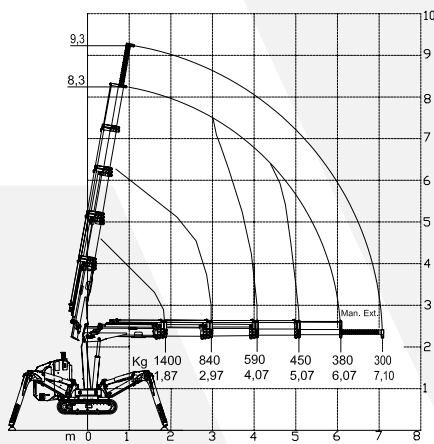
MCR40 load chart



MCR40 + winch 800kg load chart



MCR40 narrow stabilization loading chart



MCR40 narrow stabilization + winch 800kg load chart

