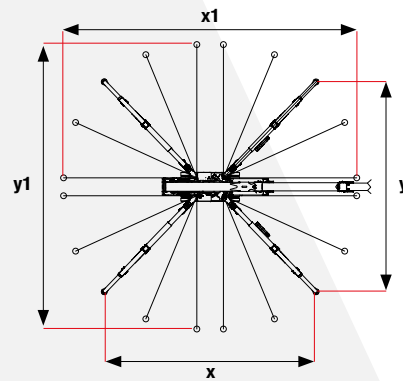
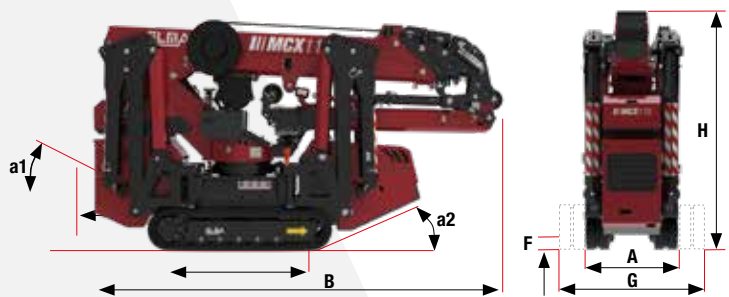




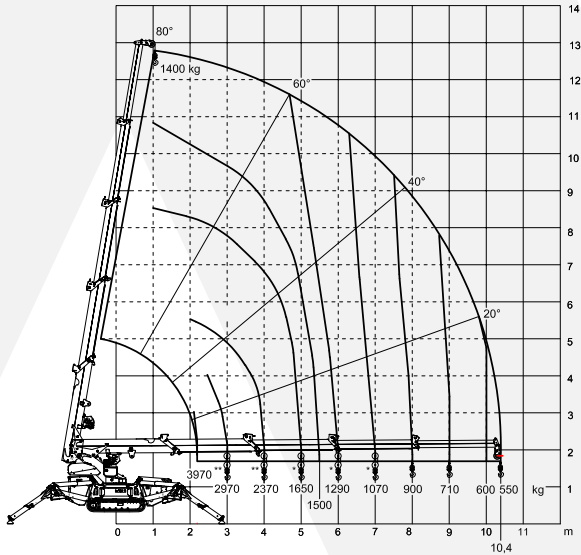
TECHNICAL DATA		STD	E
A	m	0,79	
B	m	3,45	
B JIB	m	3,65	
C	m	1,24	
D	m	1,00	
D JIB	m	1,30	
E	m	0,51	
F	m	0,14	
G	m	0,98	
H	m	1,90	
H JIB	m	1,96	
a1	°	25°	
a2	°	25°	
X	m	max 5,7	min 4,4
Y	m	max 5,6	min 4,3
X1	m	max 7,8	min 5,9
Y1	m	max 7,6	min 5,7
Max moment crane	Tm	11,0	
Max horizontal outreach	m	10,3	
Maximum load capacity	kg	4000	
Crane boom working angle	°	- 5 + 80°	
Rotation angle of the crane arm	°	endless	
Rotation speed	kNm	15,6	
Max travel speed	km/h	2,1	
Max slope capability	°	25°	
Maximum working pressure	bar	260	
Max pressure at the distributor	l/min	40	
Hydraulic oil tank capacity	l	60	
Single line winch (optional)	kg rope	1500 (1° strato) Ø 8 - 65 m	



WEIGHTS		STD	E
Standard machine weight	kg	2980	
Two-extension jib weight	kg	250	
1.5T winch kit weight	kg	70	
Double pull winch weight	kg	30	
Quadruple pull winch weight	kg	50	
Max ground pressure of the tracks	kg/cm ²	0,66	
Max load on stabilizer foot	kg	3100	
ALIMENTAZIONE		STD	E
Kubota D902 diesel engine	16,1kW/22HP @3600 rpm	•	-
Electric motor 230Vac (optional)	2,2kW/3HP 230Vac/50Hz	•	-
Electric motor	8kW/11HP 48Vdc	-	•
Battery characteristics	48Vdc 240Ah Lithium Ion	-	•

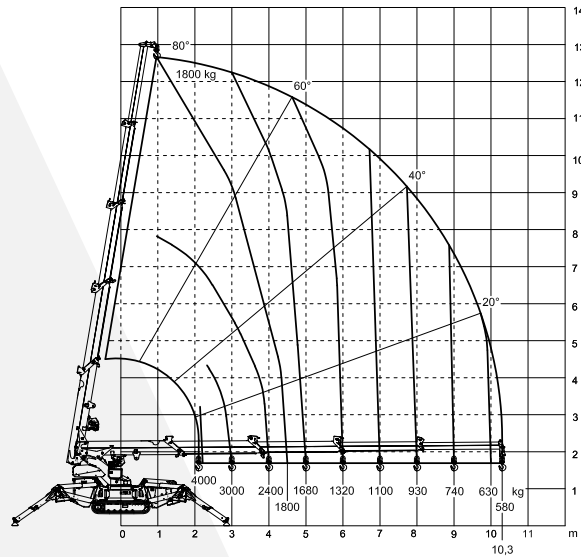


MCX110 + winch load chart

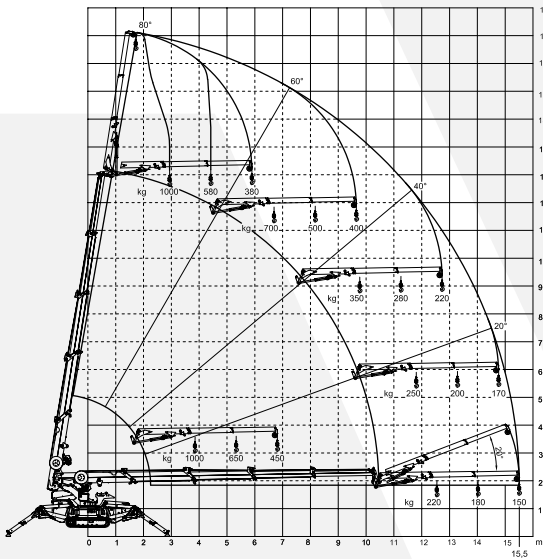


* Double pull winch
** Quadruple pull winch

MCX110 + hook load chart



MCX110 + jib + hook load chart



MCX110 + jib + winch load chart

