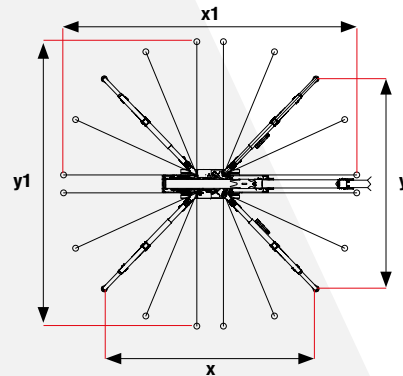
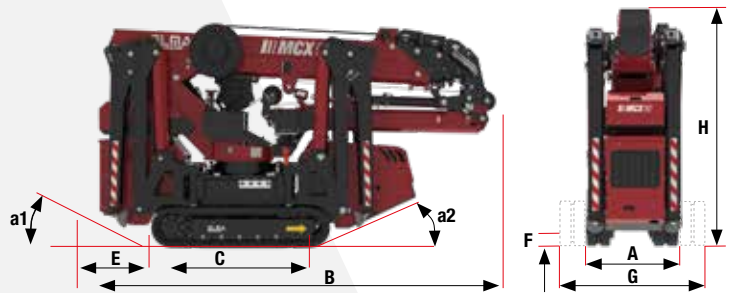


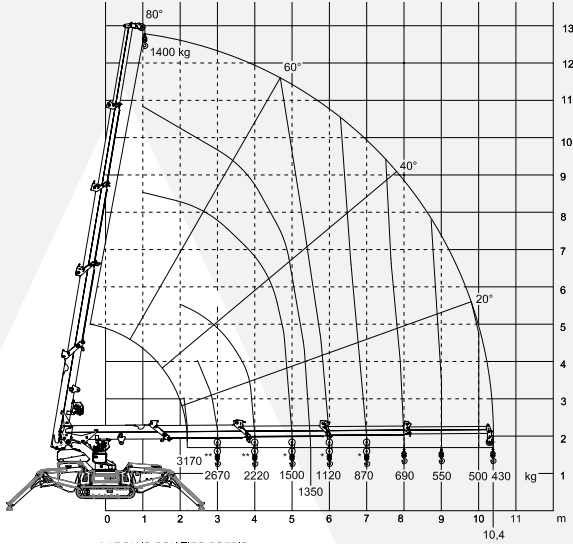


TECHNICAL DATA		STD	E
A	m	0,79	
B	m	3,45	
B JIB	m	3,65	
C	m	1,24	
D	m	1,00	
D JIB	m	1,30	
E	m	0,51	
F	m	0,14	
G	m	0,98	
H	m	1,90	
H JIB	m	1,96	
a1	°	25°	
a2	°	25°	
X	m	max 5,0	min 4,5
Y	m	max 5,0	min 4,5
X1	m	max 7,0	min 6,0
Y1	m	max 6,8	min 5,8
Max moment crane	Tm	9,0	
Max horizontal outreach	m	10,3	
Maximum load capacity	kg	3200	
Crane boom working angle	°	- 5 + 80°	
Rotation angle of the crane arm	°	endless	
Rotation speed	kNm	15,6	
Max travel speed	km/h	2,1	
Max slope capability	°	25°	
Maximum working pressure	bar	240	
Max pressure at the distributor	l/min	40	
Hydraulic oil tank capacity	l	60	
Single line winch (optional)	kg rope	1500 (1° strato) Ø 8 - 65 m	

WEIGHTS		STD	E
Standard machine weight	kg	2690	
Jib weight	kg	250	
1.5T winch kit weight	kg	70	
Double pull winch weight	kg	30	
Quadruple pull winch weight	kg	50	
Max ground pressure of the tracks	kg/cm ²	0,58	
Max load on stabilizer foot	kg	3150	
ENGINE OPTIONS		STD	E
Kubota D902 diesel engine	16,1kW/22HP @3600 rpm	•	-
Electric Motor 230Vac (optional)	2,2kW/3HP 230Vac/50Hz	•	-
Electric motor	8kW/11HP 48Vdc	-	•
Battery characteristics	48Vdc 240Ah Lithium Ion	-	•

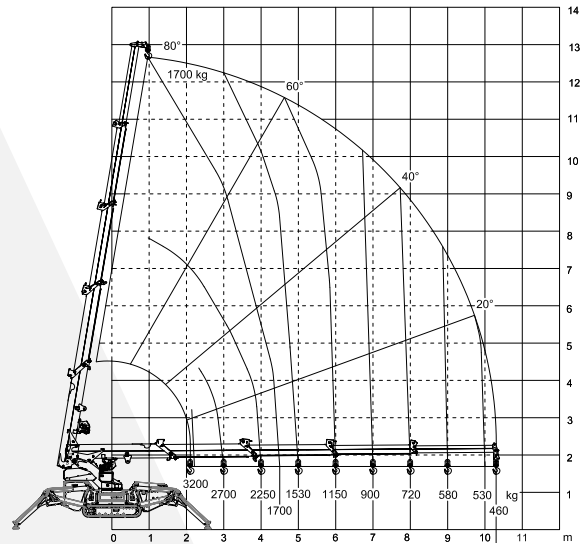


MCX90 + winch load chart

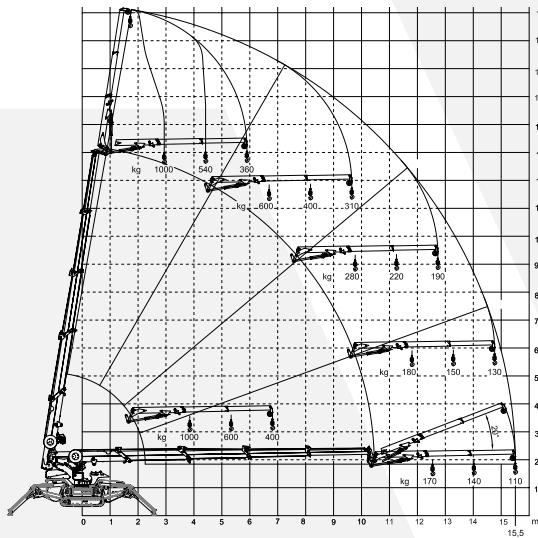


* Double pull winch
** Quadruple pull winch

MCX90 + hook load chart



MCX90 + jib + hook load chart



MCX90 + jib + winch load chart

