

# monitor

the world's  
best equipment  
supported  
locally

Sales | Service | Parts | Hire | Finance

## Monitor 3315/300 Spider Lift

1800 025 024  
[monitor.net.au](https://monitor.net.au)

@MonitorAUS



V1.0 - 250122



# MONITOR 3315/300



The Monitor 3315's unique telescoping articulated boom design provides exceptional up and over outreach specifications. Dual position stabilizer legs allow the 3315 to be set-up in the most difficult locations. Even with the stabilizers set in the narrow position, a complete 360 degrees slew is still possible!

This 33 m Spider Lift is amazingly compact. With the basket removed, the length is only 6.5 m. Height is 1.99 m and width 1.39 m for commercial doorway access (with tracks retracted.) The extra-long travel stabilizer legs mean you can not only set the 3315 up on very uneven ground, but it can also self-load onto some trucks and trailers.

Strong steel booms ensure an extremely stable working platform. A very large 2.2 m wide basket can be used on this rugged machine.

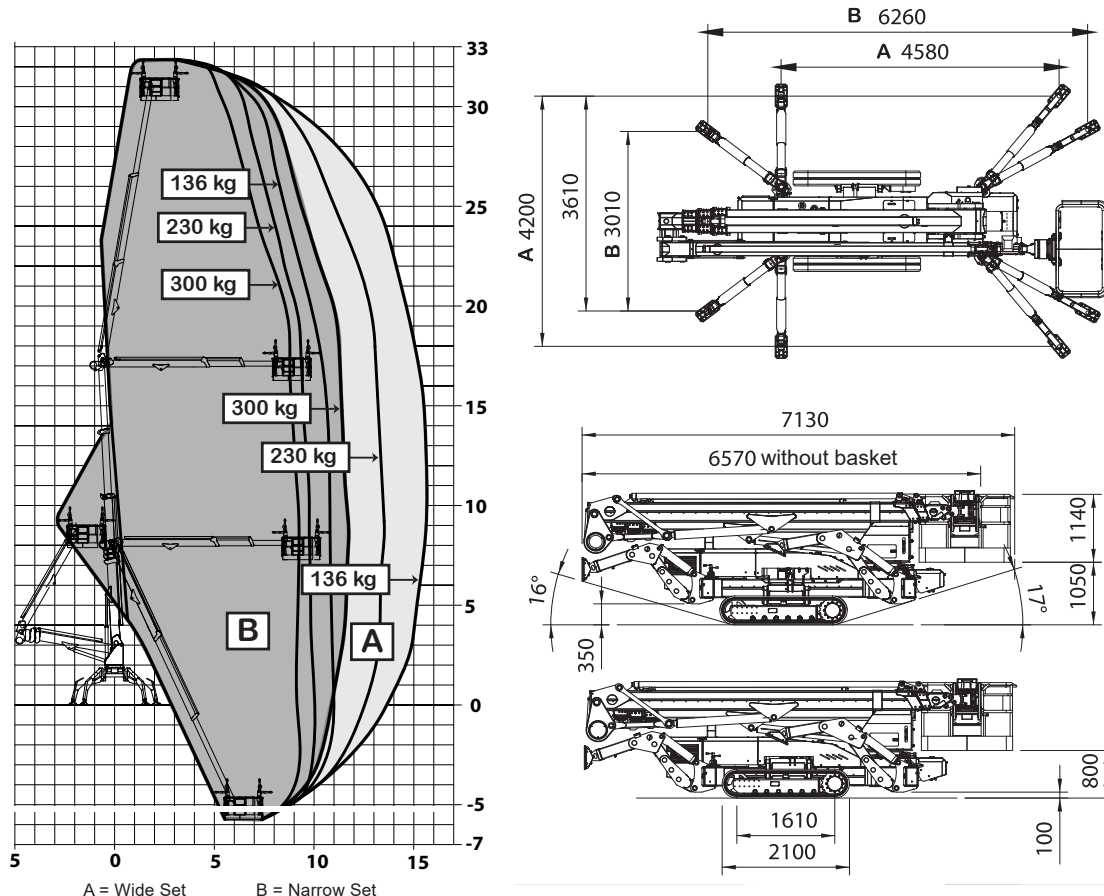








# Technical Specifications



<b>Max working height</b>	<b>32.40 m</b>
<b>Max horizontal outreach</b>	<b>15.60 m</b>
Max rated capacity	300 kg
<b>Weight: Engine</b>	<b>TBC</b>
: Engine + Lithium Batteries	7180 kg
Turret rotation	400°
Basket rotation	180°
Ground pressure driving (approx)	68.6 kN/m <sup>2</sup>
Max stabiliser force	46.8 kN
Max stabiliser pressure (std foot pad)	520 kN/m <sup>2</sup>
Traffic load (live load) travelling (tracks narrow)	6.75 kN/m <sup>2</sup>
Traffic load (live load) stabilised wide	3.5 kN/m <sup>2</sup>
Traffic load (live load) stabilised narrow	3.4 kN/m <sup>2</sup>
Auto levelling	Std
Max slope for stabilisers (no extra pads)	27°
Gradeability lengthwise	16°
Gradeability sideways	17°
Standard engine	Kubota 22 Hp Diesel
Dual power options	240V or Lithium Batteries
Expanding tracks	Std
Max drive speed	2.2 km/h
Radio control	Std
Electric emergency lowering	Std
(All specs E&OE and subject to change)	
Basket Options: Small	1500 x 800 mm
: Medium	1800 x 800 mm
: Large (std)	2200 x 800 mm









—  
**minimised  
downtime  
guarantee\***  
—



**monitor**

the world's best equipment supported locally

Monitor 3315 Spider Lift

6



# Our Locations

## Branches & Service Centres



### Tamworth

143 Gunnedah Rd  
Tamworth NSW 2340



### Sydney

49-50 Cassola Pl  
Penrith NSW 2740



### Melbourne

24-28 William Rd  
Dandenong South VIC 3175



### Brisbane

191 Magnesium Dr  
Crestmead QLD 4132



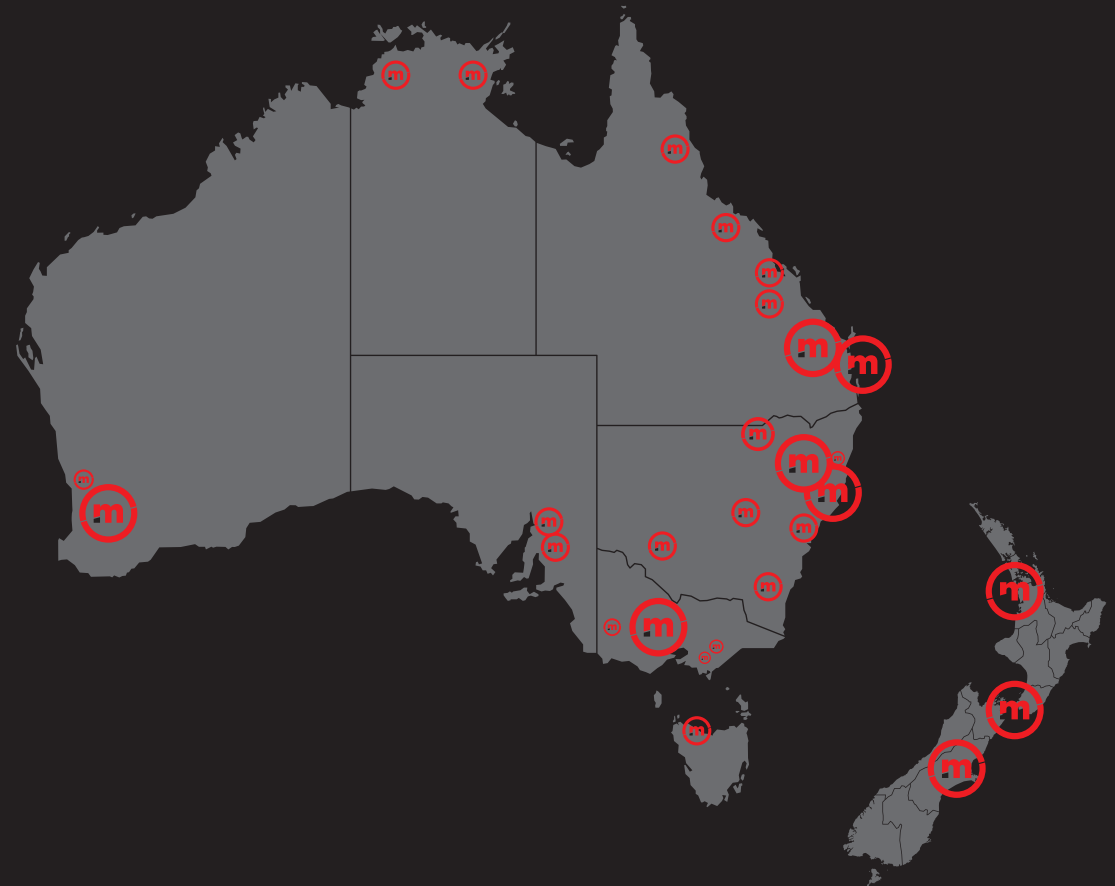
### Brisbane - Caboolture

2 Alta Road  
Caboolture QLD 4510



### Perth

11 Reihill Rd  
Maddington WA 6109



[agent@monitor.net.au](mailto:agent@monitor.net.au)

1800 025 024  
[monitor.net.au](http://monitor.net.au)

@MonitorAUS



**monitor**

the world's best equipment supported locally

Monitor 3315 Spider Lift

7