

# monitor

the world's  
best equipment  
supported  
locally

Sales | Service | Parts | Hire | Finance

## Monitor 54T Spider Lift

1800 025 024  
[monitor.net.au](https://monitor.net.au)

@MonitorAUS



V1.0 - 250218

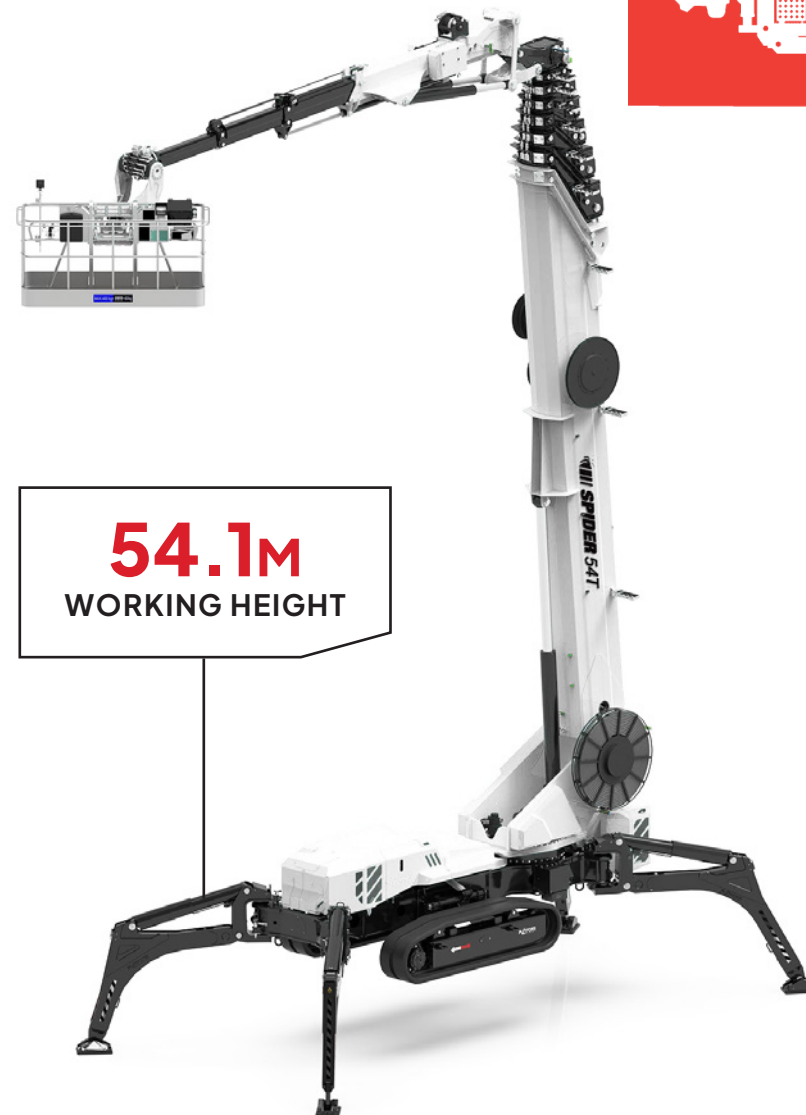


# MONITOR 54T

The Monitor 54T Spider Lift is a concentrate of technology; its potential allows it to be the ideal solution for large projects and 'logistical' challenges requiring a higher vertical load-bearing capacity.

Its distinctive feature is its working height, which places it at the top of the industry. Thanks to Platform Basket's experience and design and construction expertise, operators can now reach places that are not usually accessible, opening up new perspectives in areas such as construction, infrastructure maintenance, telecommunications and industry.

The platform is equipped with a telescopic jib with three hydraulic extensions, which allows a horizontal reach of 18.5 m at a height of 45 m and with 400 kg in the basket (the maximum value is 20 m with 136 kg capacity). The working height, together with the triple stabilisation area, offers a versatile solution for large projects and contexts with highly variable placement conditions.



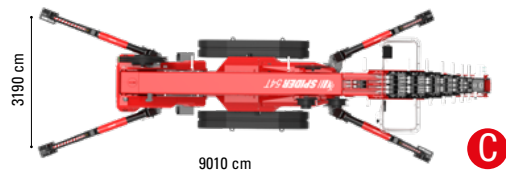
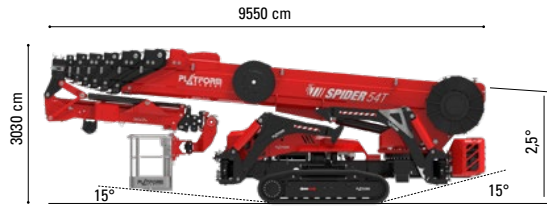
**monitor**  
**Access**







# Technical Specifications



## TANK CAPACITY

Hydraulic oil tank	210 L
Fuel tank	100 L

## MACHINE WEIGHTS

Weight (basic version)	23000 kg
Ground pressure on stabilisers	167 kN

## MOTOR

Net input power	53 kW
Technical data	12 V

## HOISTING WINCH

Direct Pull	1000 kg
Quantity of Rope	56 m
Max. Hoisting speed	20 m/min
Rope Diameter	8 mm

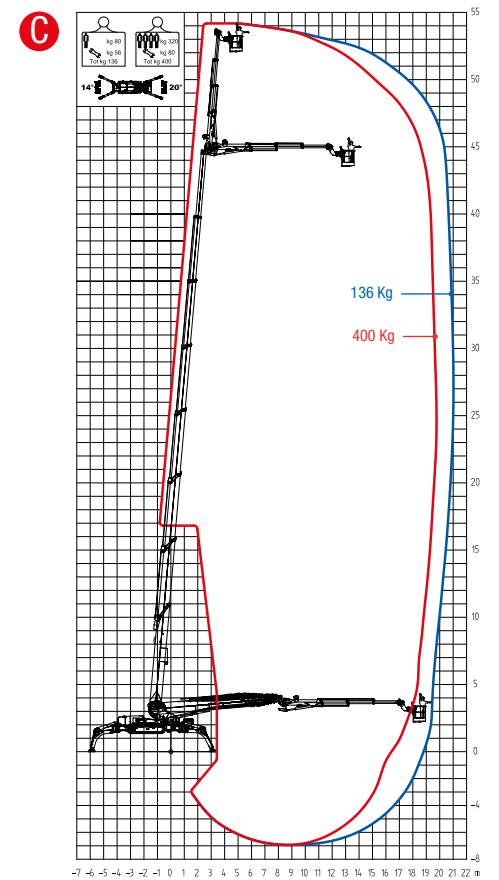
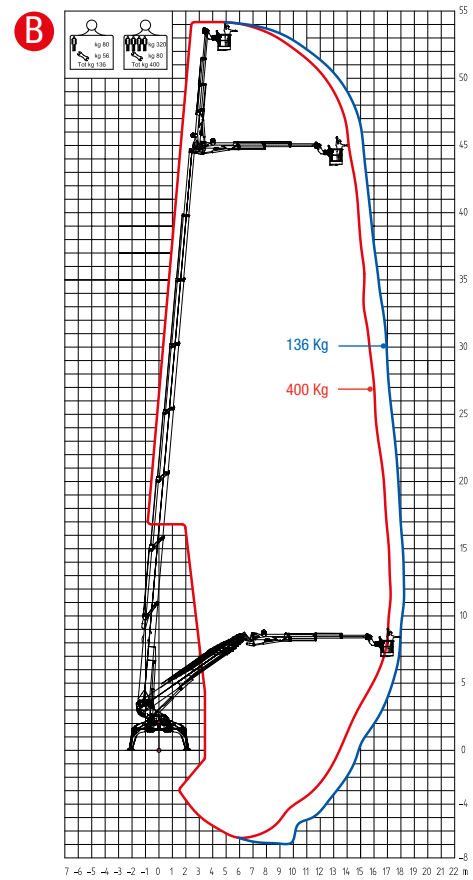
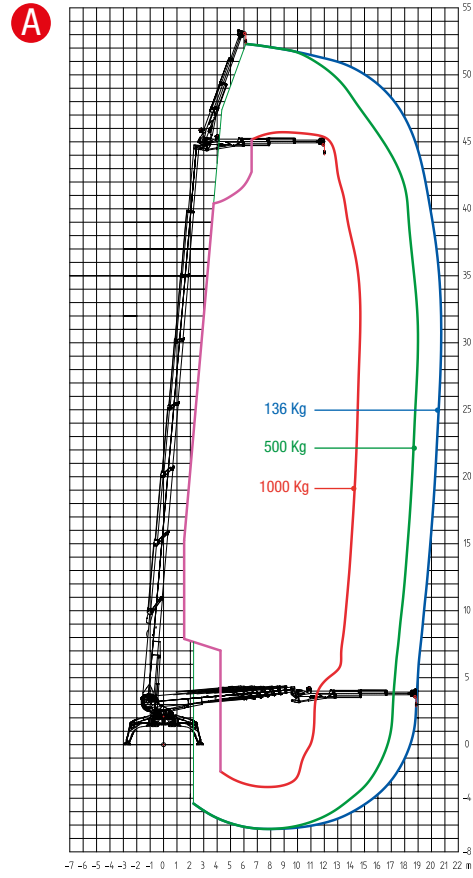
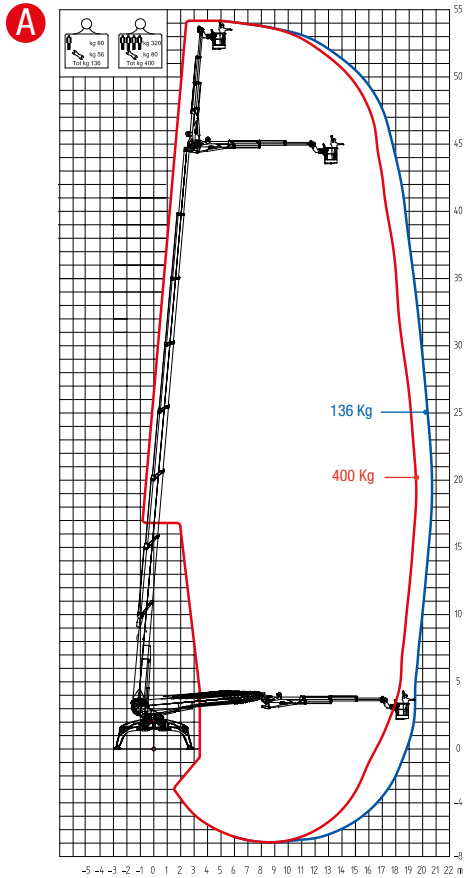
Compliant with:  
 - UNI EN 13000 Cranes - Mobile Cranes;  
 - ISO4301-1/2 Cranes

(All specs E&OE and subject to change)

Max working height	54.1 m
Max platform height	52.2 m
Max horizontal outreach with load basket 136 kg	21 m
Max rated capacity	400 kg
Turret rotation	360°
Basket rotation	±180°
Max slope	20°
Max side slope with narrow/wide carriage	12 / 15 m
Max travel speed	2.2 km/hr
Norminal track dimensions	450 x 78 x 81 cm
Max permissible wind speed	12.5 m/sec
Max permissible manual stress	400 N

## DIMENSIONS

Max permissible inclination on outriggers for AWP working consent	±1°
Machine length folded with basket	9.55 m
Machine length folded without basket	9.55 m
Machine width folded with basket	2.43 m
Machine width folded without basket, tracks retracted	1.75 m
Machine height folded with retracted carriage	2.45 m
Undercarriage height (with undercarriage extended)	0.42 m
Aluminium basket size	2.3 x 0.91 m





# Optional Accessories

## 1000 kg Winch

Switch out your Spider Lift's basket to a 1000kg Lifting Winch when needed.

Transform your Spider Lift to a Spider Crane, and easily hoist materials easily.









—  
**minimised  
downtime  
guarantee\***  
—





# Our Locations

## Branches & Service Centres



### Tamworth

143 Gunnedah Rd  
Tamworth NSW 2340



### Sydney

49-50 Cassola Pl  
Penrith NSW 2740



### Melbourne

24-28 William Rd  
Dandenong South VIC 3175



### Brisbane

191 Magnesium Dr  
Crestmead QLD 4132



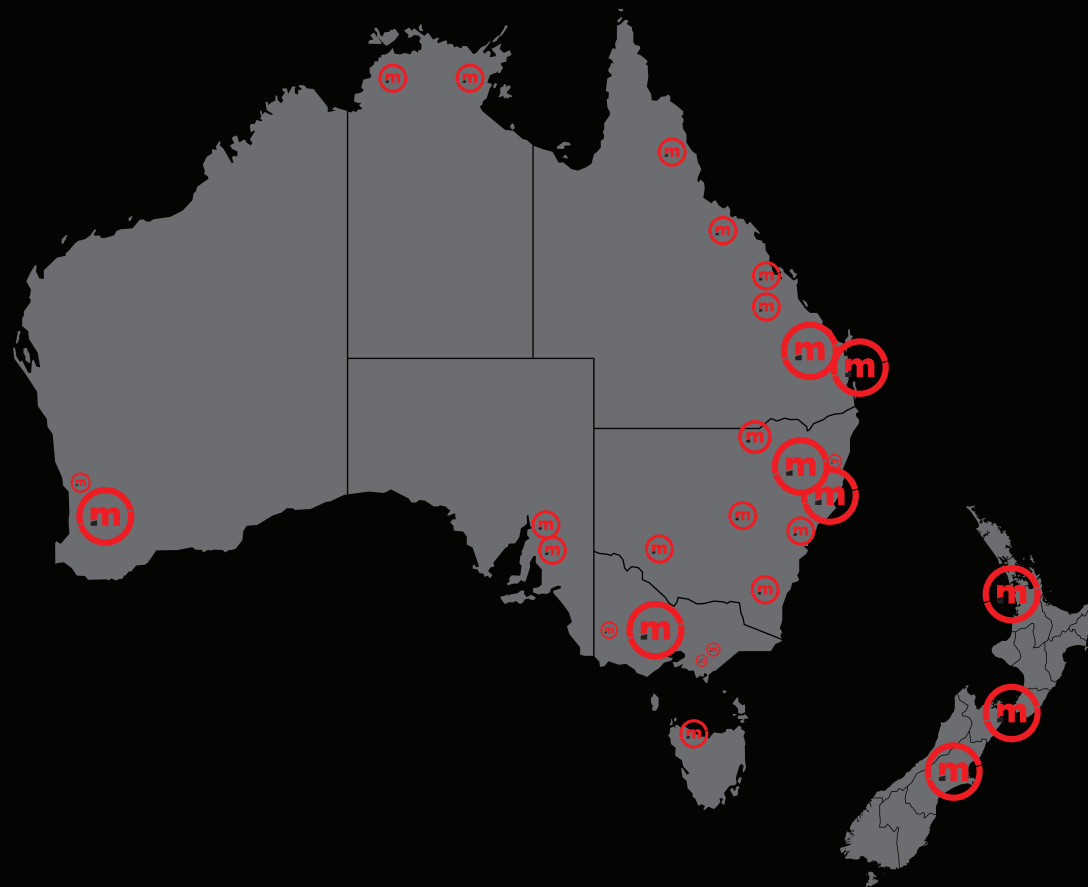
### Brisbane - Caboolture

2 Alta Road  
Caboolture QLD 4510



### Perth

11 Reihill Rd  
Maddington WA 6109



[agent@monitor.net.au](mailto:agent@monitor.net.au)

1800 025 024  
[monitor.net.au](http://monitor.net.au)

@MonitorAUS



**monitor**

the world's best equipment supported locally

Monitor 54T Spider Lift

9