

monitor

the world's
best equipment
supported
locally

Sales | Service | Parts | Hire | Finance

CMC S18FR-D Spider Lift

1800 025 024
monitor.net.au

@MonitorAUS



V1.0 - 250304



CMC S18FR-D

monitor
Access



The CMC S18FR-D is fully hydraulic, featuring one pantograph, two telescopic boom extensions, and an articulating jib.

With an incredible 11.15 m of horizontal outreach and a 230 kg basket capacity, the S18FR-D is an ideal machine for arbor work, property maintenance, painting, and more.

With a user-friendly design, the S18FR-D is towable on a 3.5T GVM trailer, thanks to a weight of only 2,580kg, and still has the ability to fit through a standard doorway, making it the ideal machine size for many industries.

Equipped with a radio-controlled remote, auto-leveling outriggers, and two-speed drive, the S18FR-D adds a whole new dimension for the operator, allowing them to view each side of the machine when operating, which improves overall safety.

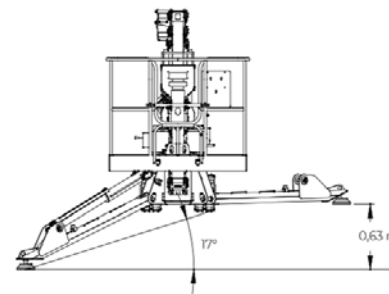
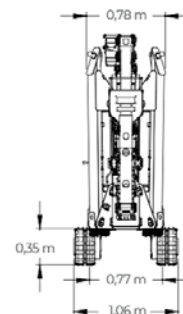
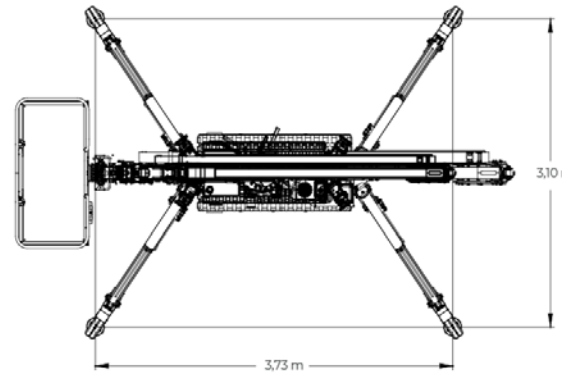
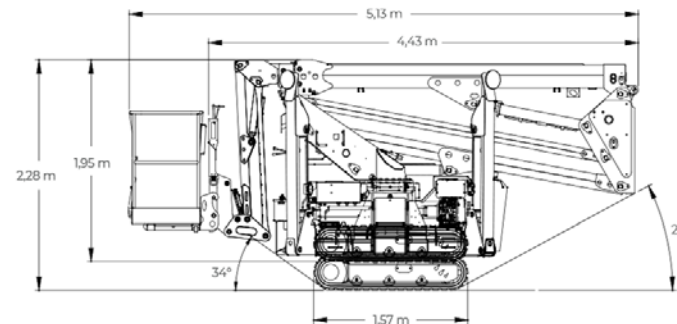
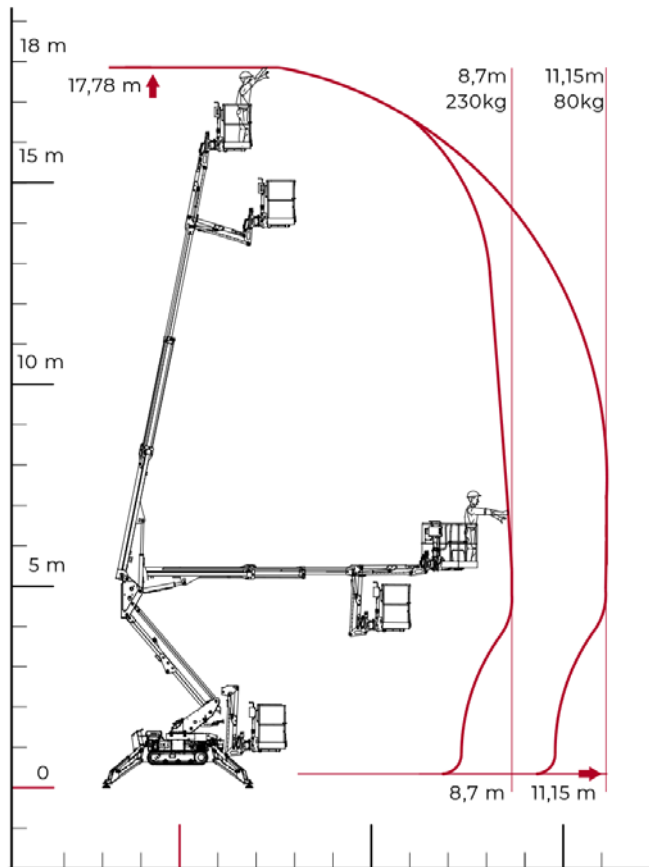
Additionally, thanks to the powerful 14HP Kubota diesel engine, the S18FR-D allows you to operate up to three functions simultaneously.



17.78m
WORKING HEIGHT



Technical Specifications



Max working height	17.78 m
Max platform height	15.78 m
Max horizontal outreach (with 80 kg)	11.15 m
Max rated capacity	230 kg
Weight	2580 kg
Basket dimensions	1.4 x 0.7 x 1.1 m
Basket rotation	±90° (options)
Turret rotation	±178° (356° non-continuous)
2-Speed Drive	Yes
Auto-Level Stabilizer Legs	Yes
Radio-Control	Yes
Standard Engine	14 hp Kubota Diesel & 240V Electric Motor
Expanding Tracks	Std

(All specs E&OE and subject to change)





—
**minimised
downtime
guarantee***
—



Our Locations

Branches & Service Centres



Tamworth

143 Gunnedah Rd
Tamworth NSW 2340



Sydney

49-50 Cassola Pl
Penrith NSW 2740



Melbourne

24-28 William Rd
Dandenong South VIC 3175



Brisbane

191 Magnesium Dr
Crestmead QLD 4132



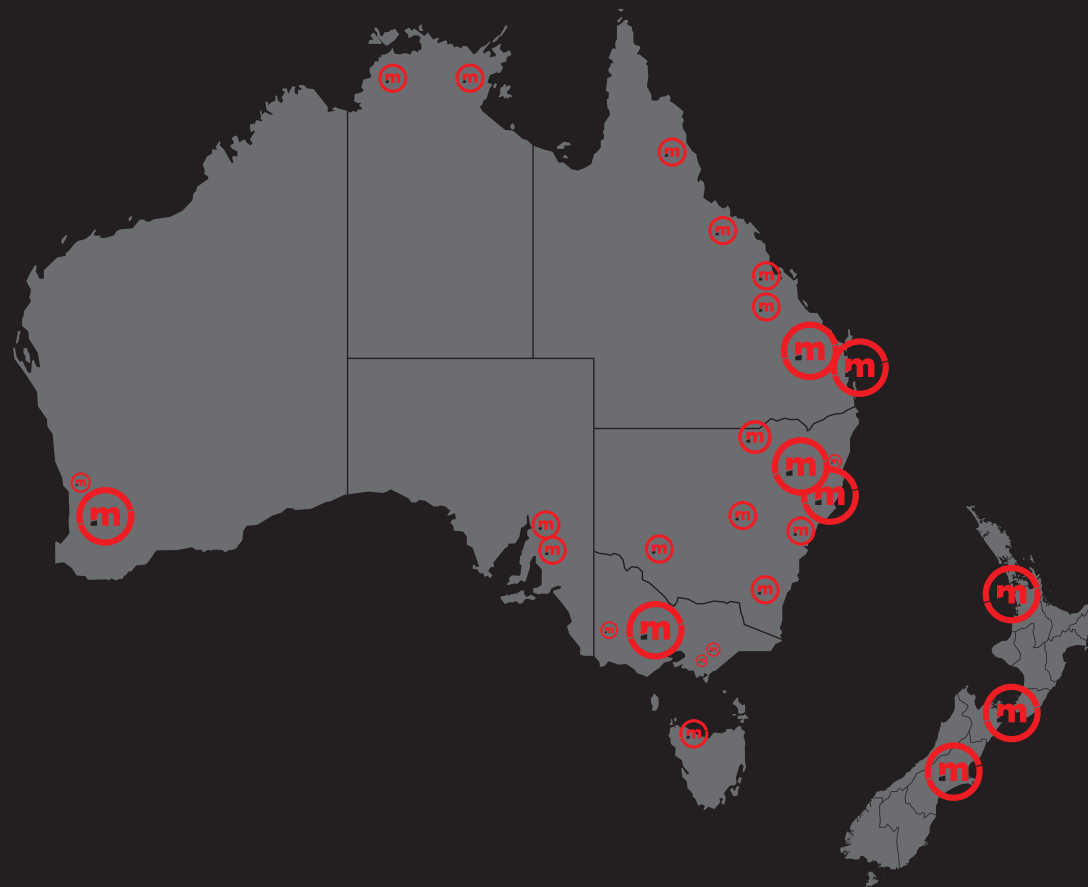
Brisbane - Caboolture

2 Alta Road
Caboolture QLD 4510



Perth

11 Reihill Rd
Maddington WA 6109



agent@monitor.net.au

1800 025 024
monitor.net.au

@MonitorAUS



monitor

the world's best equipment supported locally

CMC S18FR-D Spider Lift

7