

# monitor

the world's  
best equipment  
supported  
locally

Sales | Service | Parts | Hire | Finance

## CMC S19E Spider Lift

1800 025 024  
[monitor.net.au](http://monitor.net.au)

@MonitorAUS



V1.0 - 250304





# CMC S19E

**monitor**  
**Access**



The CMC S19E Spider Lift is easy to operate, easy to maintain, and perfect for hire.

With only one work area and a 200 kg unrestricted capacity, the CMC S19E is a narrow tracked boom lift. It is ultra-compact and user-friendly, featuring intuitive controls and no fuss.

The S19E can pass through a single doorway and operate in the tightest of spaces. It also offers impressive height and outreach, with a maximum basket capacity of 200 kg.



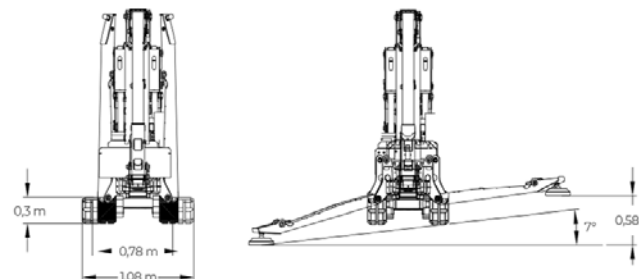
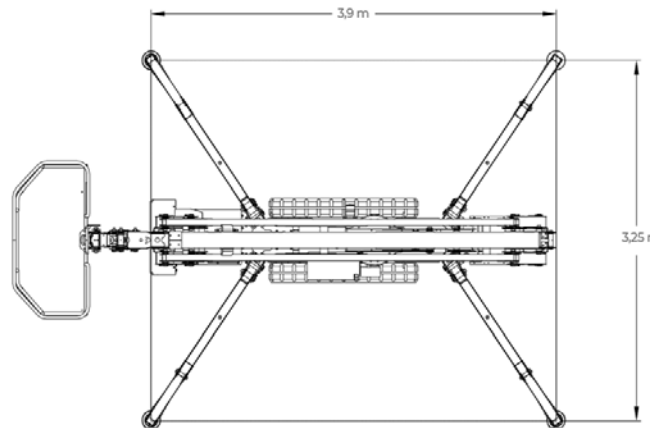
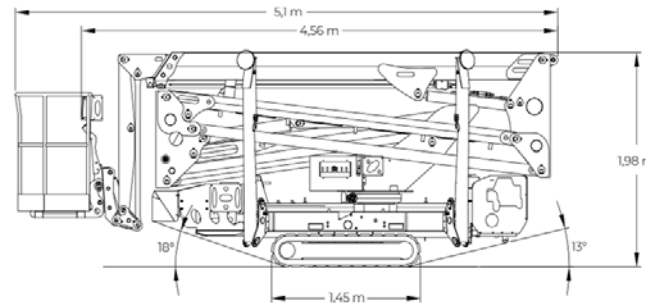
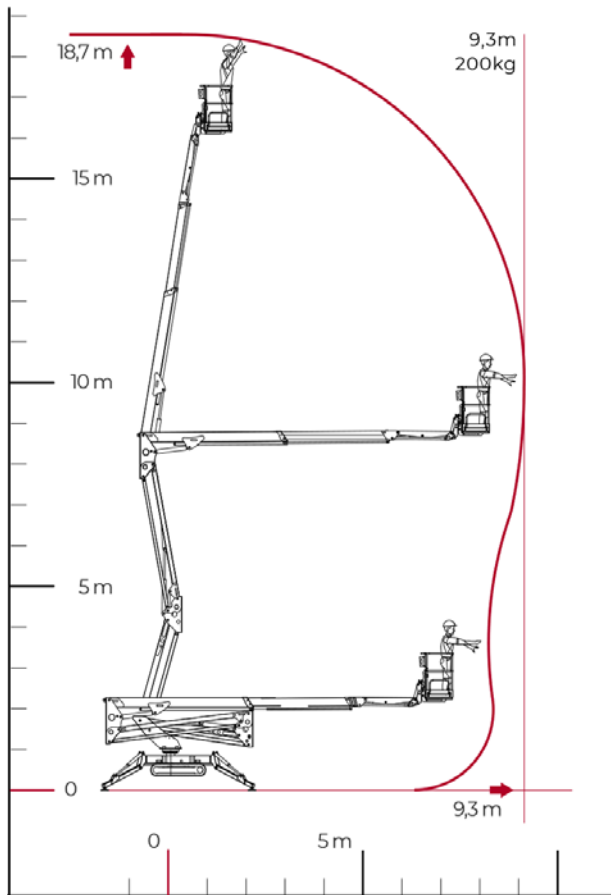
**18.7m**  
WORKING HEIGHT







# Technical Specifications



<b>Max working height</b>	<b>18.7 m</b>
Max platform height	16.7 m
<b>Max horizontal outreach (with 200 kg)</b>	<b>9.3 m</b>
Max rated capacity	200 kg
<b>Weight</b>	<b>2545 kg</b>
Basket dimensions	1.4 x 0.7 x 1.1 m
Turret rotation	±178° (365° non-continuous)
Standard engine	13 HP Honda Engine & 240V Electric Motor
Expanding tracks	Std
2-Speed drive	Yes
Drive controls	Curly Cord Remote

(All specs E&OE and subject to change)









—  
**minimised  
downtime  
guarantee\***  
—



# Our Locations

## Branches & Service Centres



### Tamworth

143 Gunnedah Rd  
Tamworth NSW 2340



### Sydney

49-50 Cassola Pl  
Penrith NSW 2740



### Melbourne

24-28 William Rd  
Dandenong South VIC 3175



### Brisbane

191 Magnesium Dr  
Crestmead QLD 4132



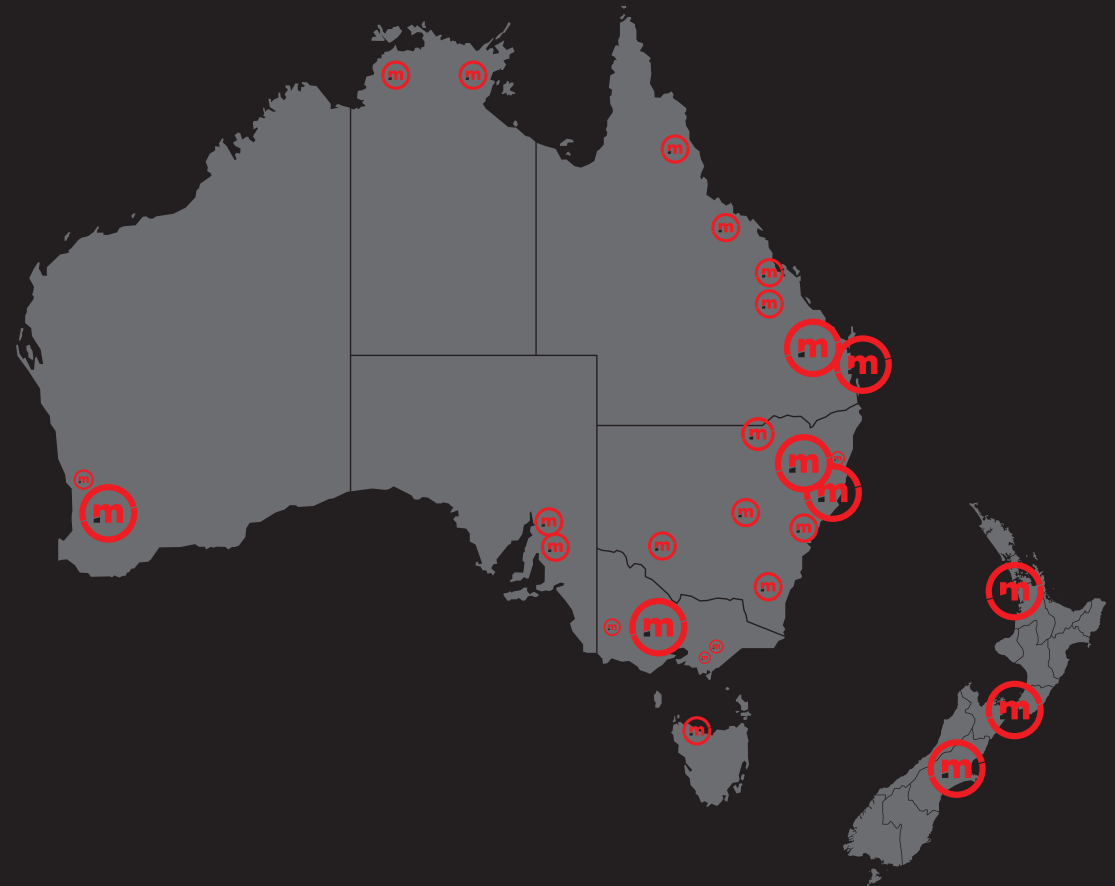
### Brisbane - Caboolture

2 Alta Road  
Caboolture QLD 4510



### Perth

11 Reihill Rd  
Maddington WA 6109



[agent@monitor.net.au](mailto:agent@monitor.net.au)

1800 025 024  
[monitor.net.au](http://monitor.net.au)

@MonitorAUS



**monitor**

the world's best equipment supported locally

CMC S19E Spider Lift

7