

monitor

the world's
best equipment
supported
locally

Sales | Service | Parts | Hire | Finance

CMC S19N Spider Lift

1800 025 024
monitor.net.au

@MonitorAUS

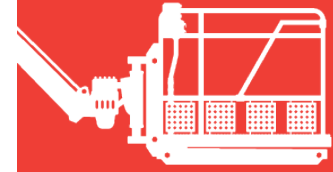


V1.0 - 250304



CMC S19N

monitor
Access



The CMC S19N is the most compact spider lift access platform available in this size range, with the shortest stabilising width area of less than 3 metres.

The manufacturing concept of the CMC S19N stems from the well-established and appreciated CMC S15, inheriting its ease of use, compact dimensions, and great reliability, combined with generous performance that places the machine at the top of its category. With a width of 78 cm, a height of less than 2 metres, and a length of 4.48 m, the CMC S19N is the most compact machine in its category!

The CMC S19N is a narrow tracked boom lift. It is ultra-compact and user-friendly, with intuitive controls and no fuss. The S19N can pass through a single doorway and operate in the tightest of spaces. Once set up, impressive height and outreach can be achieved.

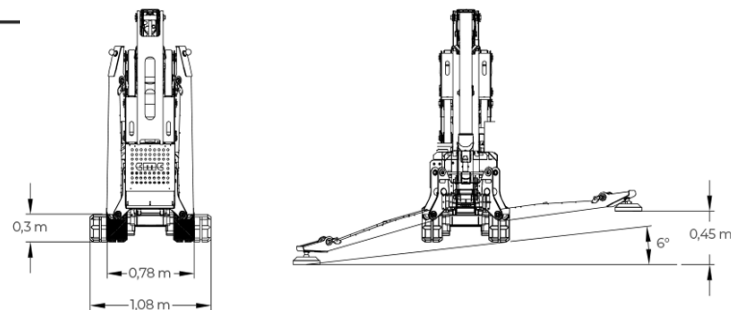
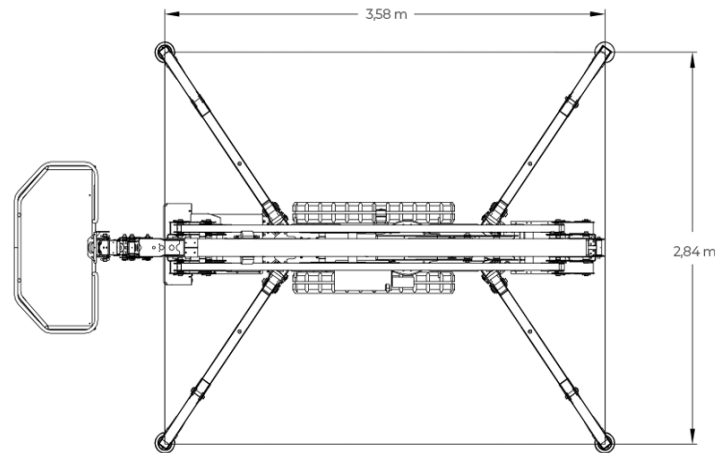
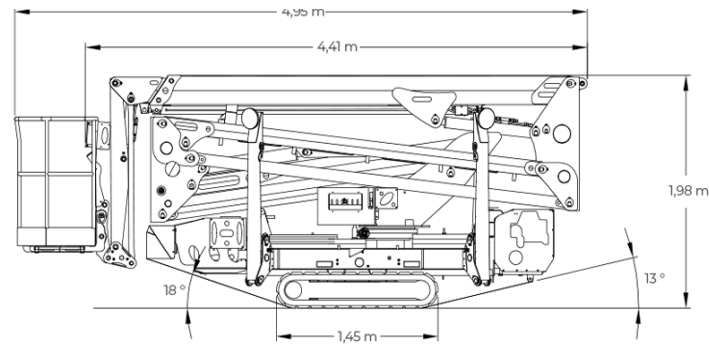
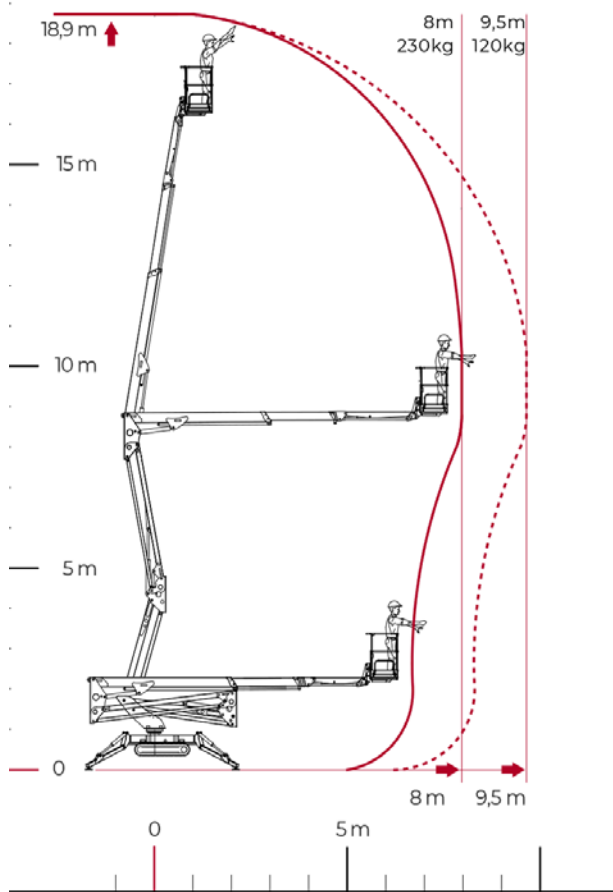
The CMC S19N has a maximum basket capacity of 230 kg and represents the beginning of a new and advanced generation of narrow access lifts.



18.7m
WORKING HEIGHT



Technical Specifications



Max working height	18.9 m
Max platform height	16.9 m
Max horizontal outreach (with 120 kg)	9.5 m
Max rated capacity	230 kg
Weight	2435 kg
Basket dimensions	1.4 x 0.7 x 1.1 m
Turret rotation	±178° (356° non-continuous)
Standard engine	Honda 13 HP Petrol & 240V Electric Motor
2-Speed drive	Std
Drive controls	Curly Cord Remote

(All specs E&OE and subject to change)





—
**minimised
downtime
guarantee***
—



Our Locations

Branches & Service Centres



Tamworth

143 Gunnedah Rd
Tamworth NSW 2340



Sydney

49-50 Cassola Pl
Penrith NSW 2740



Melbourne

24-28 William Rd
Dandenong South VIC 3175



Brisbane

191 Magnesium Dr
Crestmead QLD 4132



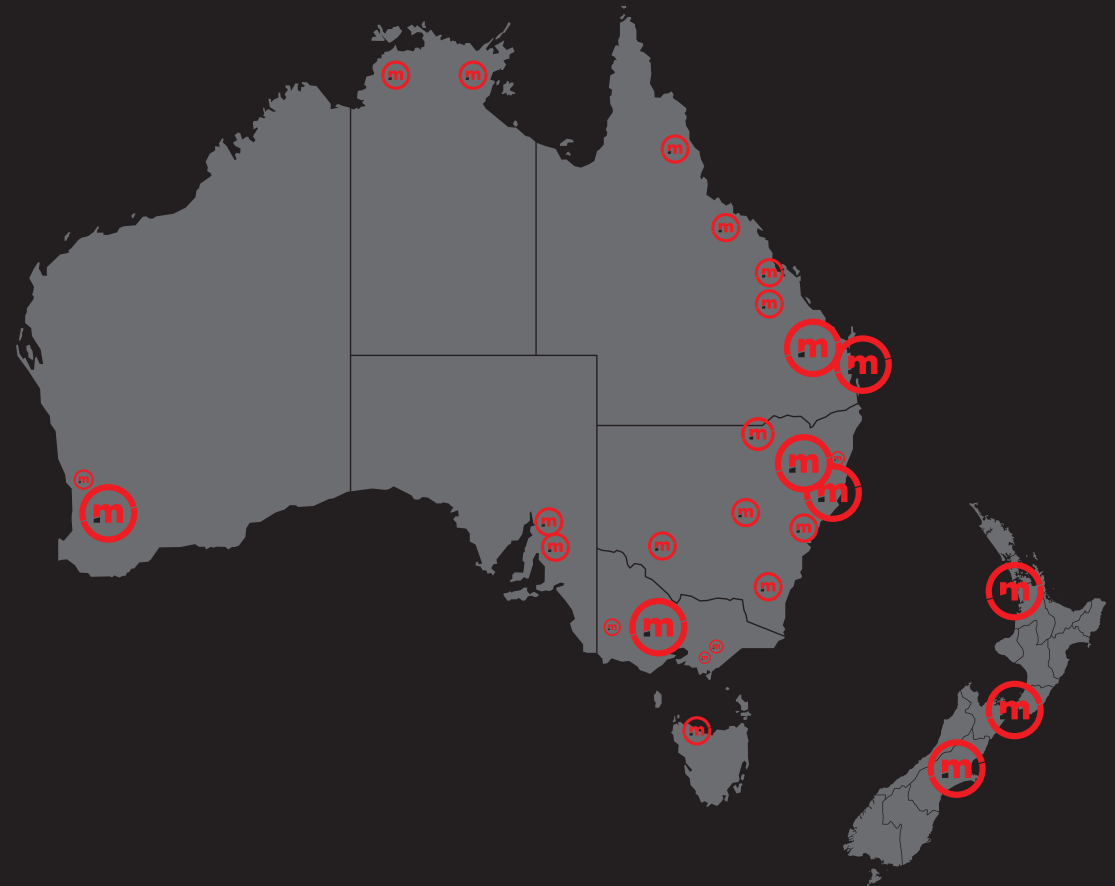
Brisbane - Caboolture

2 Alta Road
Caboolture QLD 4510



Perth

11 Reihill Rd
Maddington WA 6109



agent@monitor.net.au

1800 025 024
monitor.net.au

@MonitorAUS



monitor

the world's best equipment supported locally

CMC S19N Spider Lift