

monitor

the world's
best equipment
supported
locally

Sales | Service | Parts | Hire | Finance

Monitor E290PX Truck Mounted Lift

Hino FD 1124

1800 025 024
monitor.net.au

@MonitorAUS



V1.0 - 250606



MONITOR E290PX

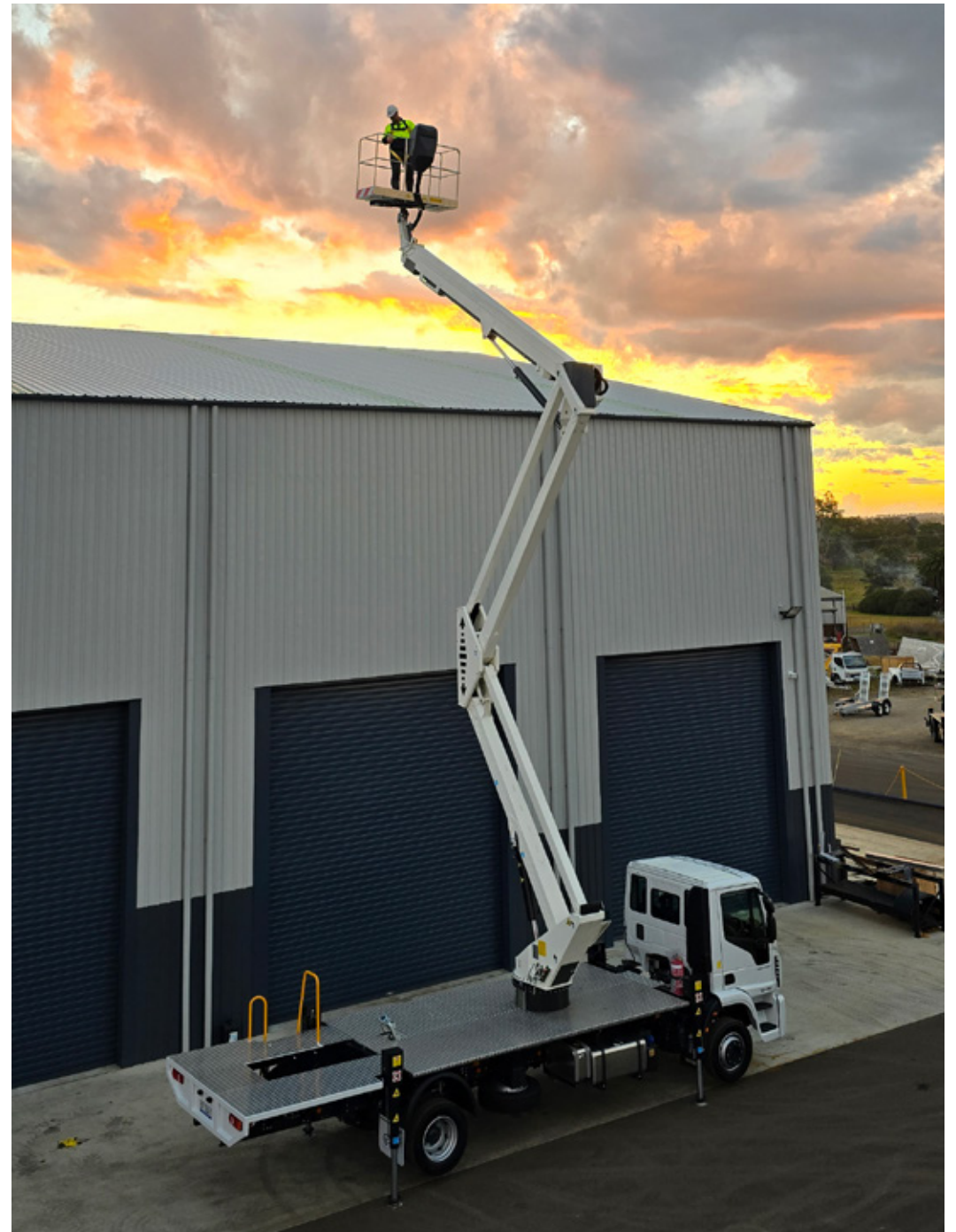
The Monitor E290PX is a versatile 28.7 m telescopic truck mounted machine. An agile unit with amazing outreach! The Monitor E290PX truck mounted lift is built to accommodate 2 persons and tools with a maximum rated capacity of 250 kg.

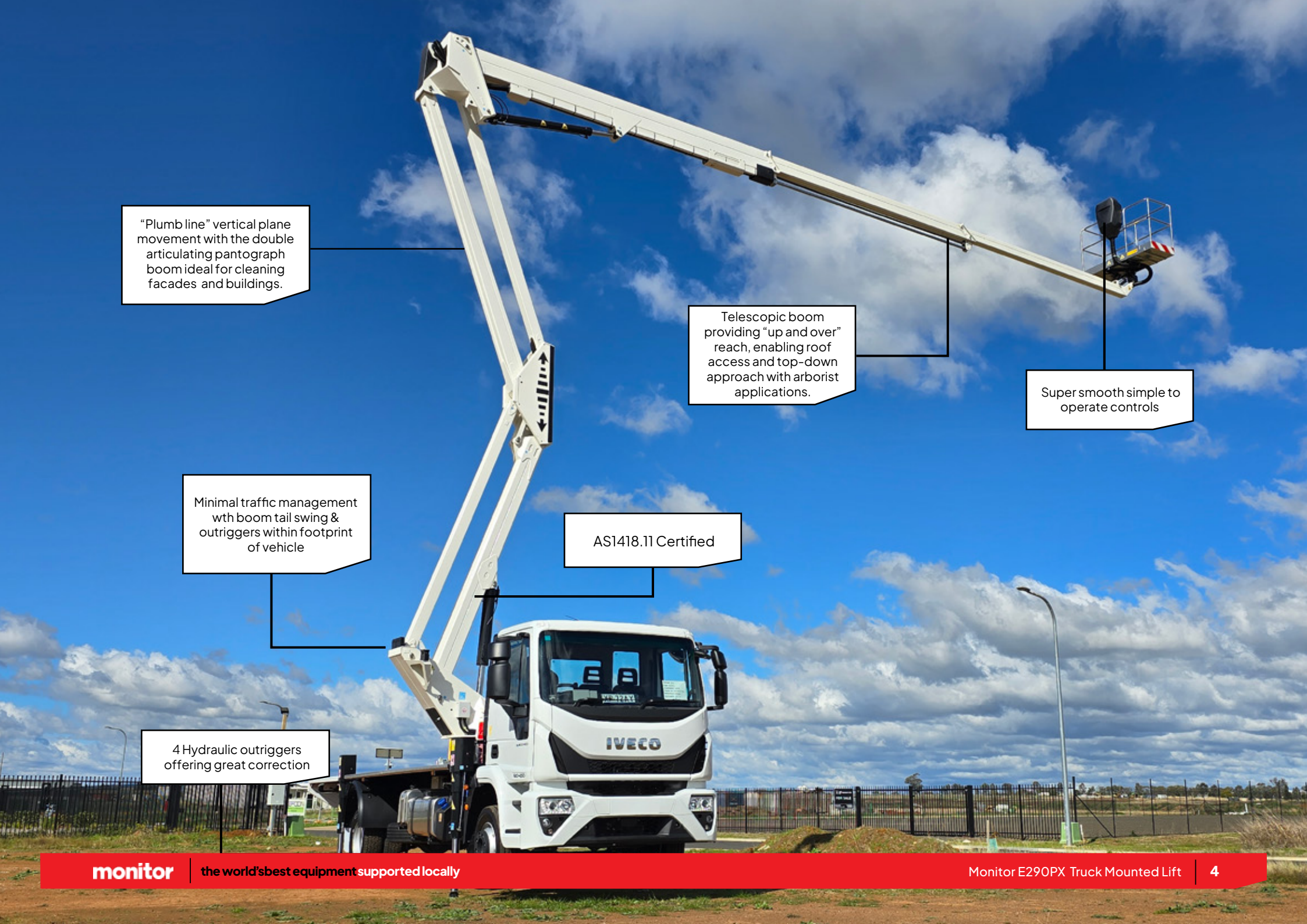
It is also equipped with hydraulic controls for lift and stabilisation functions, providing for a very smooth operation and accuracy even at full height and outreach.

The Monitor E290PX is great for applications where frequent set-ups are needed, in restricted locations with higher reach requirements.

28.7m
WORKING HEIGHT







"Plumb line" vertical plane movement with the double articulating pantograph boom ideal for cleaning facades and buildings.

Telescopic boom providing "up and over" reach, enabling roof access and top-down approach with arborist applications.

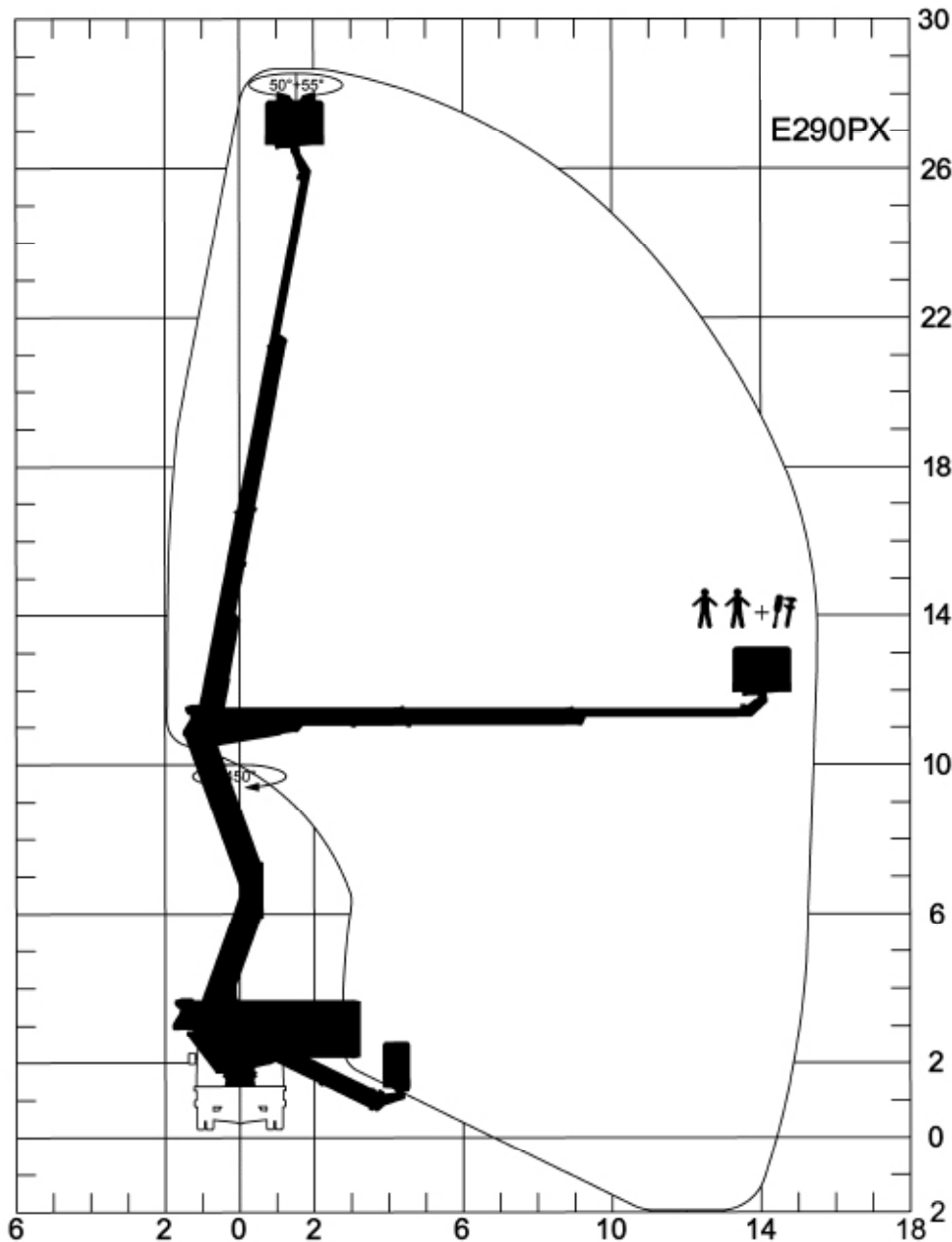
Super smooth simple to operate controls

Minimal traffic management with boom tail swing & outriggers within footprint of vehicle

AS1418.11 Certified

4 Hydraulic outriggers offering great correction

TECHNICAL SPECIFICATIONS

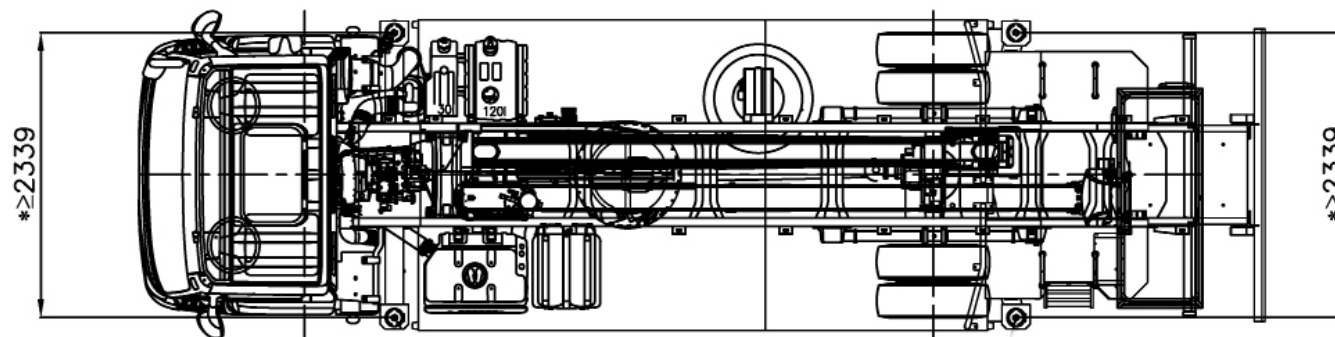
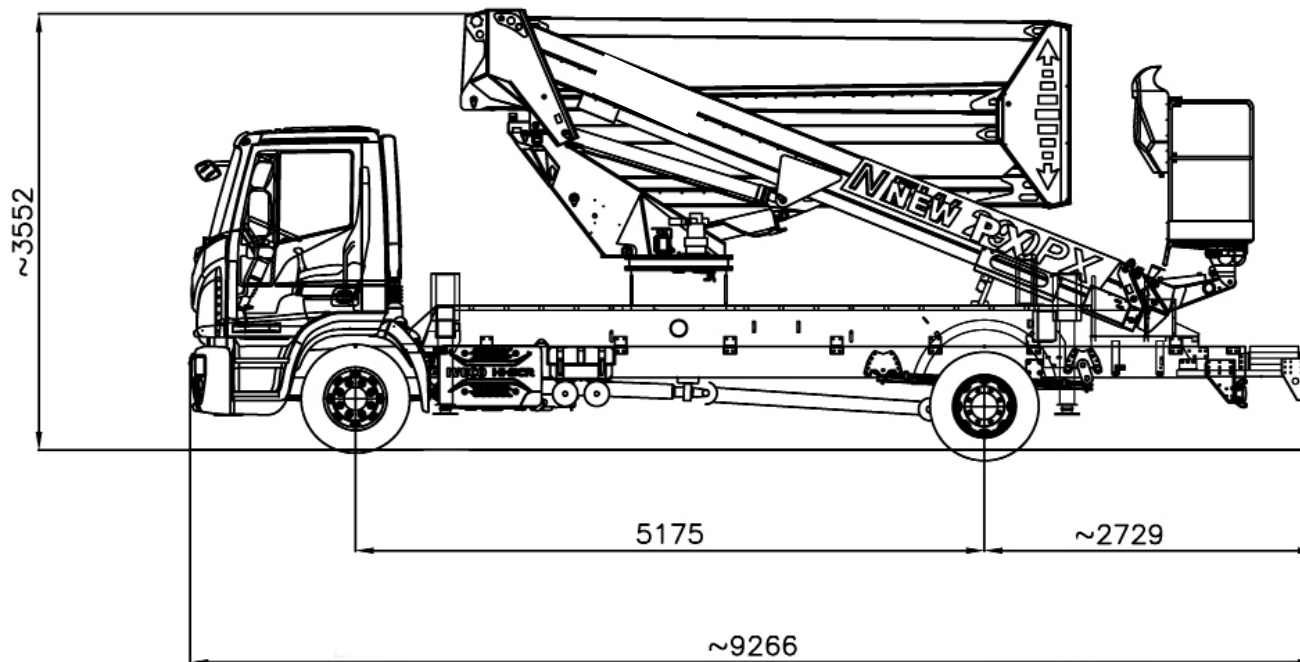


Max working height	28.7 m
Max platform height	26.7 m
Max horizontal reach	15.6 m
Max. horizontal outreach to edge of basket	14.9 m
Max. rated capacity	2 persons / 250 kg
Boom Style	Articulating/Telescopic
Turret rotation	450
Basket rotation	105°
Basket Rotation Powered	Yes
Basket Dimensions (LxWxH)	1800x700x1145
Control Type	Hydraulic
Basket Lift Slide	No
Hydraulic Tool Port at Basket	No
PTO Flow (LPM) @ 900RPM	20
PTO Pressure (BAR)	190
Standard power source	PTO from vehicle

TRUCK SPECIFICATIONS

Model	HINO
Specifications	4x2
HP	260

(All specs E&OE and subject to change)





SIMPLE HYDRAULIC CONTROLS



STRONG BOOM DESIGN EXCEEDS AS1418.11 STANDARDS



—
**minimised
downtime
guarantee***
—



Our Locations

Branches & Service Centres



Tamworth

143 Gunnedah Rd
Tamworth NSW 2340



Sydney

49-50 Cassola Pl
Penrith NSW 2740



Melbourne

24-28 William Rd
Dandenong South VIC 3175



Brisbane

191 Magnesium Dr
Crestmead QLD 4132



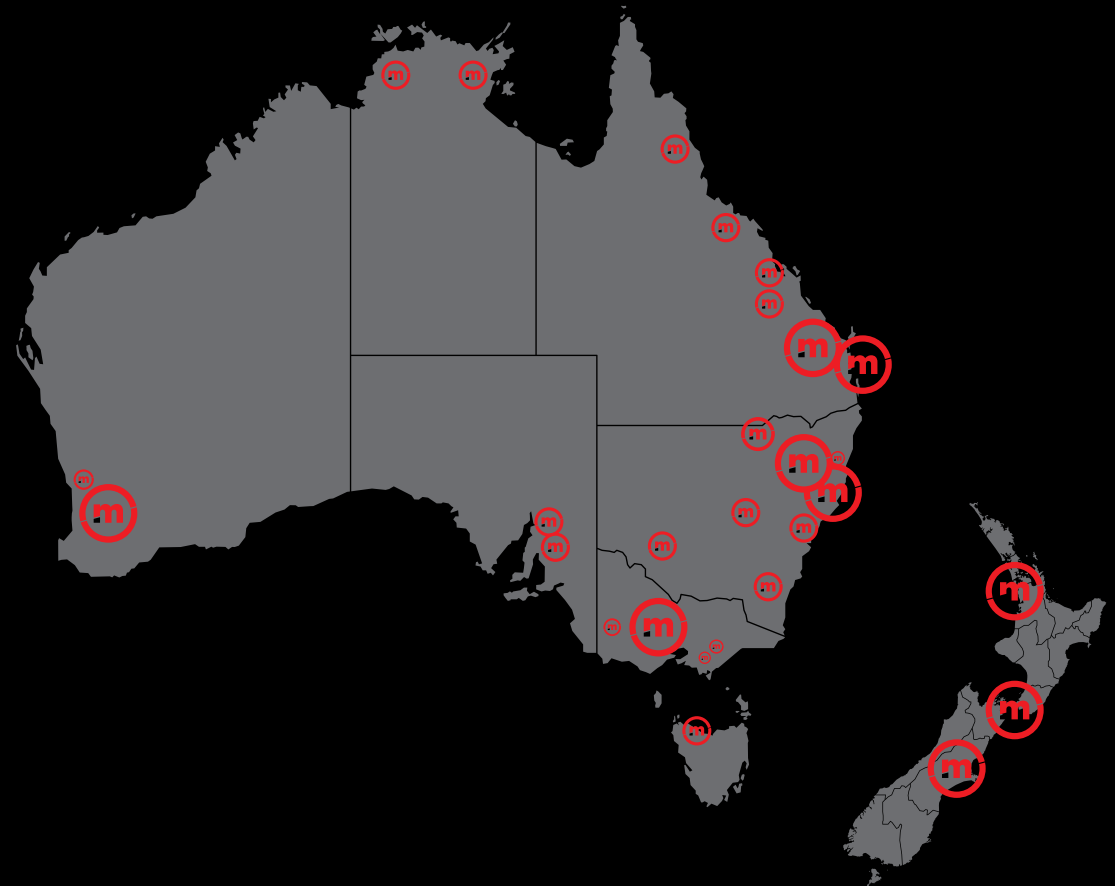
Brisbane - Caboolture

2 Alta Road
Caboolture QLD 4510



Perth

11 Reihill Rd
Maddington WA 6109



agent@monitor.net.au

1800 025 024
monitor.net.au

@MonitorAUS



monitor

the world's best equipment supported locally

Monitor E290PX Truck Mounted Lift - Hino FD 1124