

# monitor

the world's  
best equipment  
supported  
locally

Sales | Service | Parts | Hire | Finance

## Monitor E290PX Truck Mounted Lift

Iveco ML120

1800 025 024  
[monitor.net.au](https://monitor.net.au)

@MonitorAUS



V1.0 - 250606



# MONITOR E290PX

The Monitor E290PX is a versatile 28.7 m telescopic truck mounted machine. An agile unit with amazing outreach! The Monitor E290PX truck mounted lift is built to accommodate 2 persons and tools with a maximum rated capacity of 250 kg.

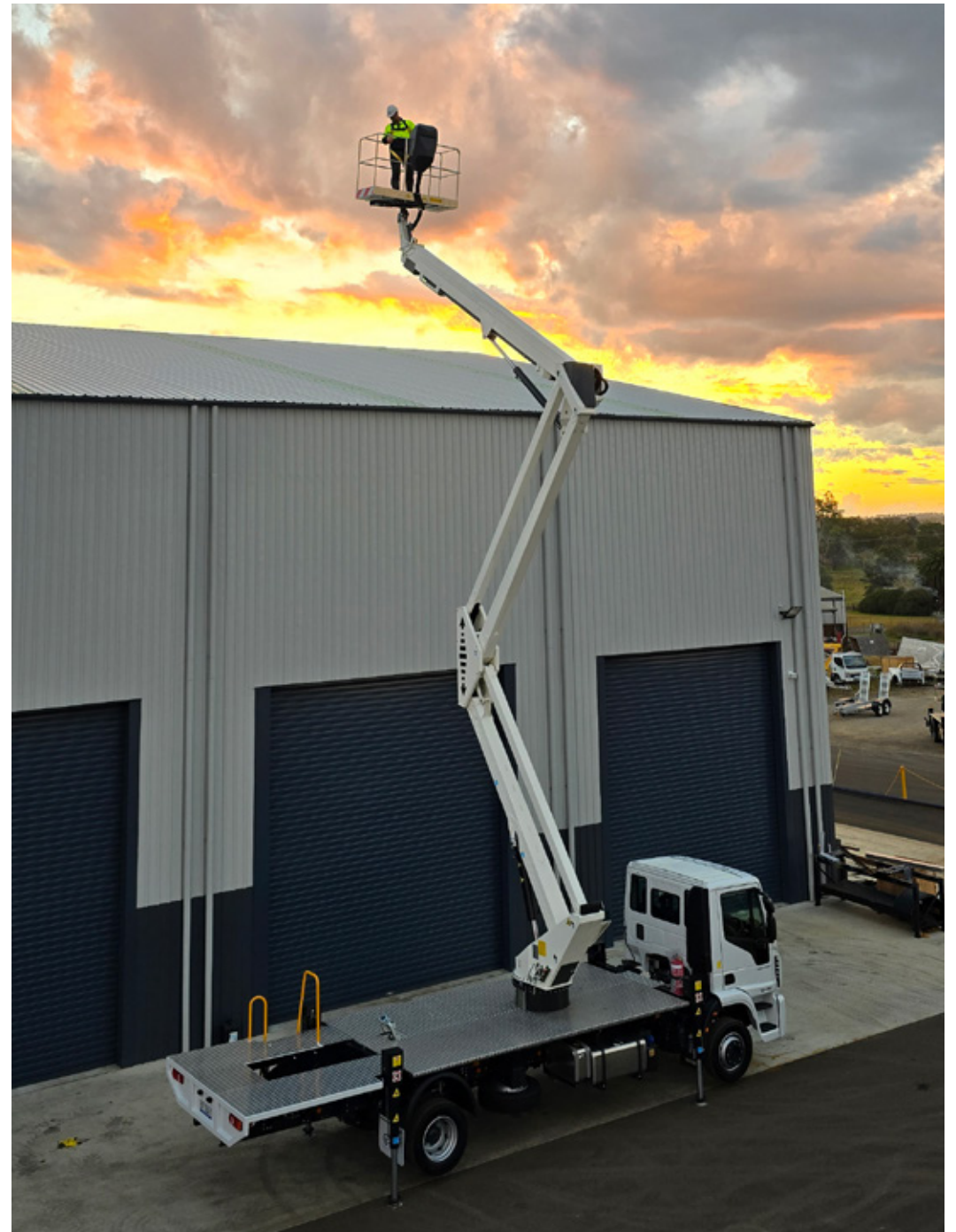
It is also equipped with hydraulic controls for lift and stabilisation functions, providing for a very smooth operation and accuracy even at full height and outreach.

The Monitor E290PX is great for applications where frequent set-ups are needed, in restricted locations with higher reach requirements.

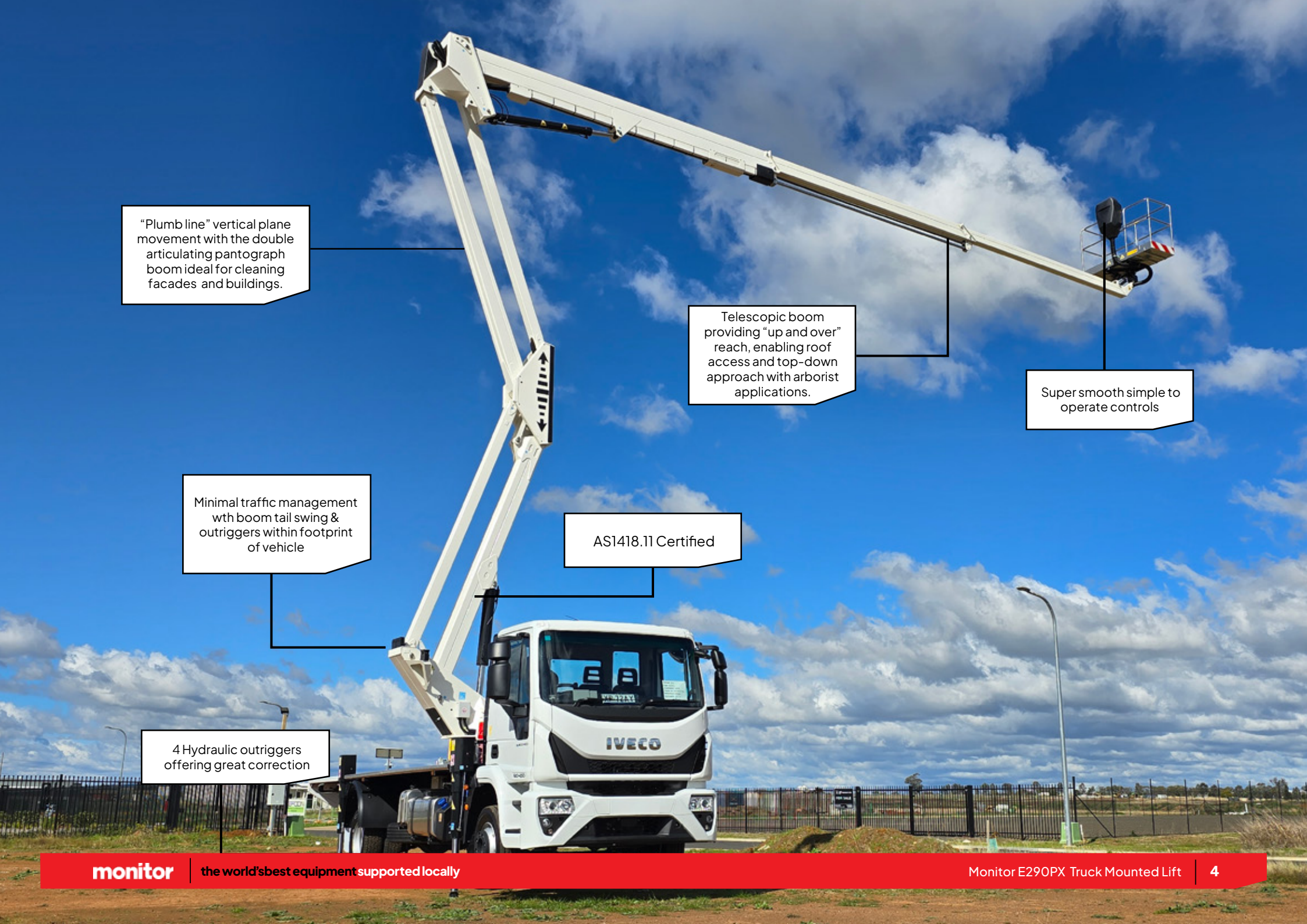
**28.7m**  
WORKING HEIGHT











"Plumb line" vertical plane movement with the double articulating pantograph boom ideal for cleaning facades and buildings.

Telescopic boom providing "up and over" reach, enabling roof access and top-down approach with arborist applications.

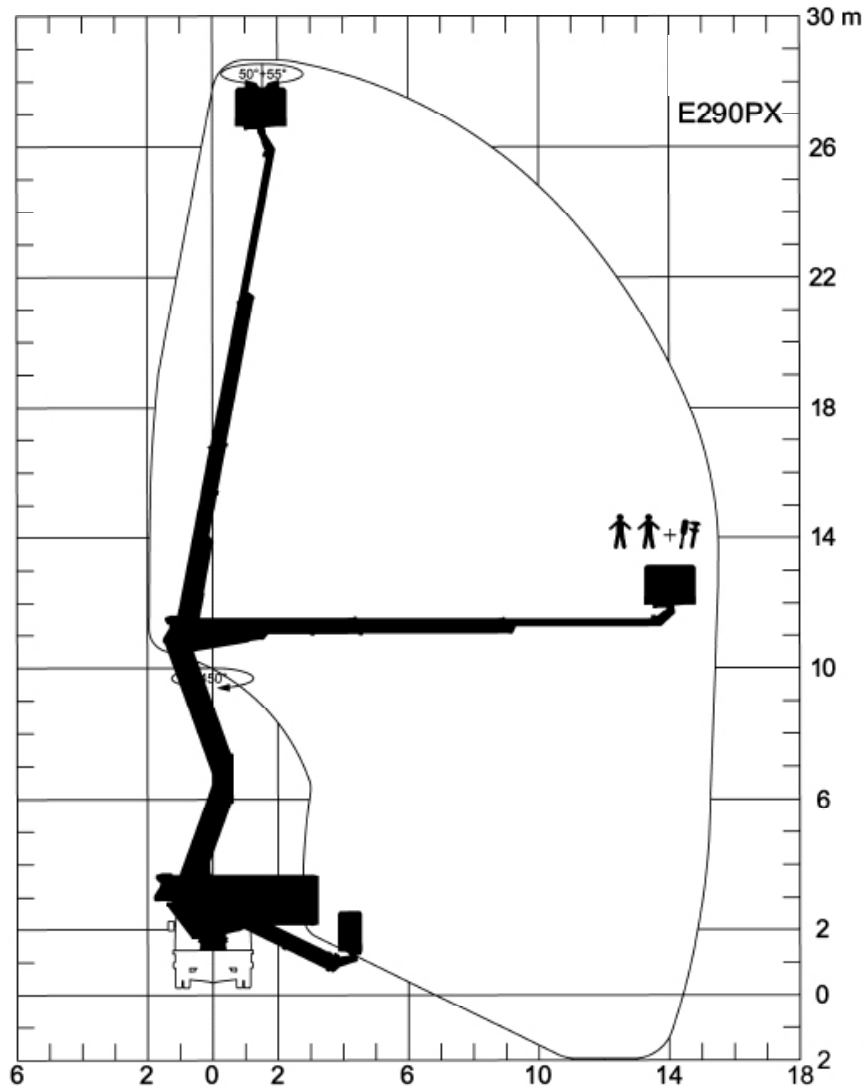
Super smooth simple to operate controls

Minimal traffic management with boom tail swing & outriggers within footprint of vehicle

AS1418.11 Certified

4 Hydraulic outriggers offering great correction

# TECHNICAL SPECIFICATIONS



## TRAILER WEIGHTS & DIMENSIONS

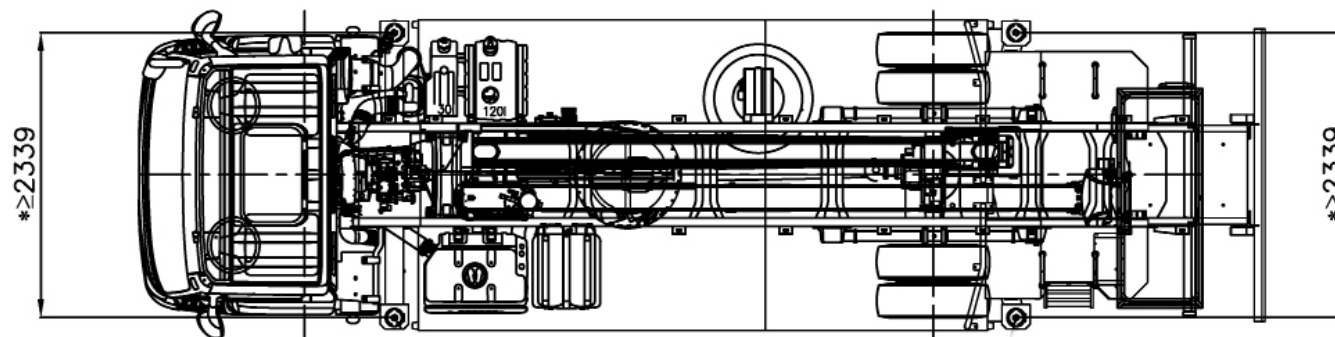
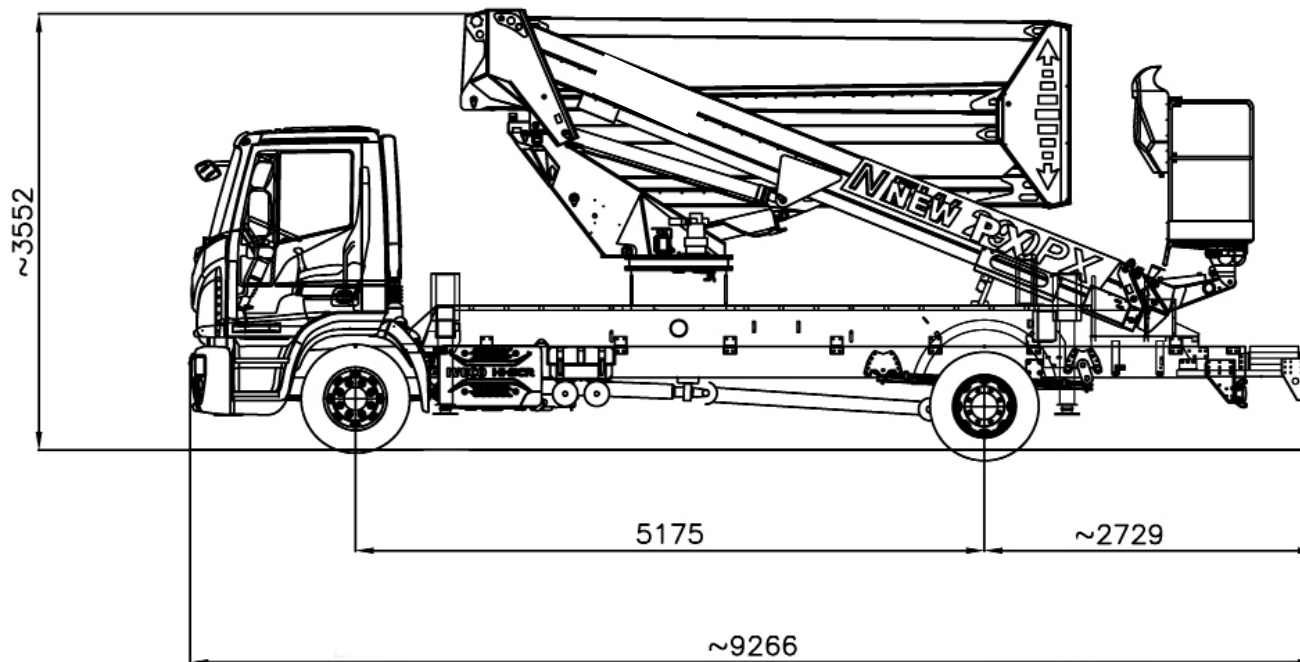
GVM	12,000 kg
Tare Weight	9,920 kg
Length	9,266 mm
Wheelbase	5,175 mm
Height	3,552 mm
Width	2,500 mm

(All specs E&OE and subject to change)

Max working height	28.7 m
Max platform height	26.7 m
Max horizontal reach	15.6 m
Max. horizontal outreach to edge of basket	14.9 m
Max. rated capacity	2 persons / 250 kg
Boom Style	Articulating/Telescopic
Turret rotation	450
Basket rotation	105°
Basket Rotation Powered	Yes
Basket Dimensions (LxWxH)	1800x700x1145 mm
Control Type	Hydraulic
Basket Lift Slide	No
Hydraulic Tool Port at Basket	No
PTO Flow (LPM) @ 900RPM	20
PTO Pressure (BAR)	190
Standard power source	PTO from vehicle

## TRUCK SPECIFICATIONS

Model	Iveco ML120
Specifications	4x2
HP	260
Transmission	AMT Auto





A close-up photograph of the hydraulic control panel for a truck-mounted lift. The panel is blue and features several indicator lights (red, yellow, blue, green) and a large red emergency stop button. Below the panel are two black hydraulic levers with silver shafts. A yellow safety label with 'OK!' and a red prohibition symbol is visible. The background shows a diamond-plate metal surface.

## SIMPLE HYDRAULIC CONTROLS

A photograph of a white truck-mounted lift (Monitor E290PX) extended upwards. A worker in a high-visibility yellow vest and white hard hat is standing on the lift's platform. The lift has a red and white striped safety bar and a vertical arrow indicating the direction of travel. The truck is parked in front of a building with blue corrugated metal walls.

## STRONG BOOM DESIGN EXCEEDS AS1418.11 STANDARDS





—  
**minimised  
downtime  
guarantee\***  
—





# Our Locations

## Branches & Service Centres



### Tamworth

143 Gunnedah Rd  
Tamworth NSW 2340



### Sydney

49-50 Cassola Pl  
Penrith NSW 2740



### Melbourne

24-28 William Rd  
Dandenong South VIC 3175



### Brisbane

191 Magnesium Dr  
Crestmead QLD 4132



### Brisbane - Caboolture

2 Alta Road  
Caboolture QLD 4510



### Perth

11 Reihill Rd  
Maddington WA 6109



[agent@monitor.net.au](mailto:agent@monitor.net.au)

1800 025 024  
[monitor.net.au](http://monitor.net.au)

@MonitorAUS



**monitor**

the world's best equipment supported locally

Monitor E290PX Truck Mounted Lift - Iveco ML120