



# WAIMEA E148T TRUCK MOUNTED LIFT



# WAIMEA E148T

**The Waimea E148T is a simple, strong and reliable telescopic truck mounted cherry picker. A very versatile package for heavy duty applications.**

It is equipped with exceptional strength and rigidity in the aerial platform as well as simple and intuitive operation.

This telescopic truck mounted boom lift weighs from 4490 kg GVM, has a 13.7 m vertical reach, and 8.4 m horizontal reach.

The Waimea E148T truck mounted lift is extremely rigorous, and safe to accommodate 2 persons and tools with a maximum rated capacity of 250 kg.

It is also equipped with hydraulic control levers that are robust and durable, allowing smooth full range operation—even at maximum outreach.

The Waimea E148T's outrigger legs can be operated individually using the hydraulic controls for simple leveling on uneven surfaces. The legs are vertical, and remain within the width of the truck when set up.

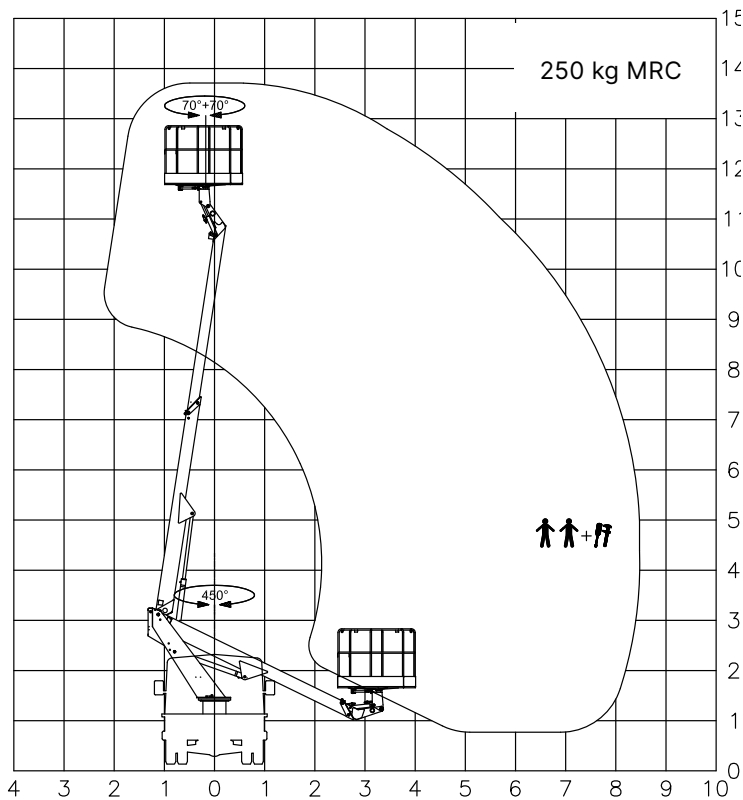
**13.7M**  
**WORKING HEIGHT**





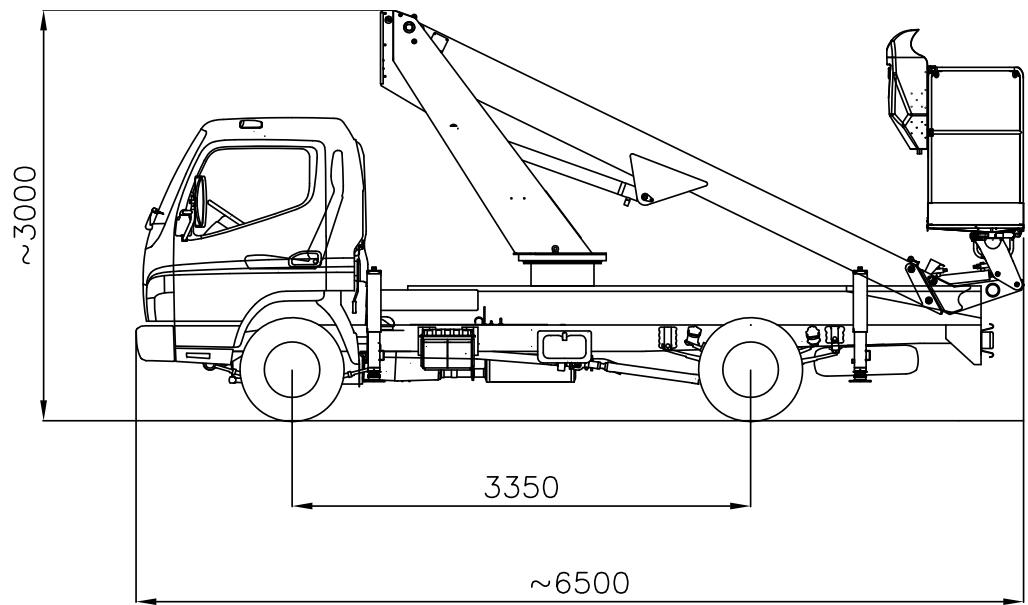


# TECHNICAL SPECIFICATIONS



<b>Max working height</b>	<b>13.70 m</b>
Max platform height	11.70 m
<b>Max horizontal reach</b>	<b>8.40 m</b>
Max. horizontal outreach to edge of basket	7.70 m
Max. rated capacity	2 persons / 250 kg
<b>Weight (approx)</b>	<b>From 4490 kg GVM (car license)</b>
Turret rotation	450°
Basket rotation	140°
Length with basket	6.50 m
Min. Transport Length	6.65 m
Min. Transport Width	2.20 m
Min. Transport height	3.00 m
Standard power source	PTO from vehicle

(All specs E&OE and subject to change)









# GET IN TOUCH

Contact **Ben Joyce** now for more information!

E: [ben.joyce@waimea.net.au](mailto:ben.joyce@waimea.net.au)

M: 0458 230 268



WAIMEA E148T - TRUCK MOUNTED LIFTS

