



# WAIMEA E209PX TRUCK MOUNTED LIFT



# WAIMEA E209PX

**The Waimea E209PX is a super compact 20 m truck mounted cherry picker. A very versatile package for heavy duty applications. The modern double knuckle technology also provides a very compact machine without the problems of “tail swing” associated with conventional single-knuckle boomlifts.**

This double articulated cherry picker, developed by GSR, weighs from 4490 kg GVM, has a 20 m working height, and 9 m horizontal reach.

The Waimea E209PX truck mounted lift is extremely rigid, and safe to accommodate 2 persons and tools with a maximum rated capacity of 220 kg.

It is also equipped with proportional hydraulic controls for a very smooth operation. The heavy-duty hydraulic proportional-multifunctional joysticks are housed within a

fully protected area and provide the Operator with exceptional smoothness and accuracy even at full height and outreach. Hoses and cables are placed within the booms, with internal tracking which is protected from debris

by a set of self-cleaning brushes placed at each of the telescopic sections.

**19.9M**  
**WORKING HEIGHT**

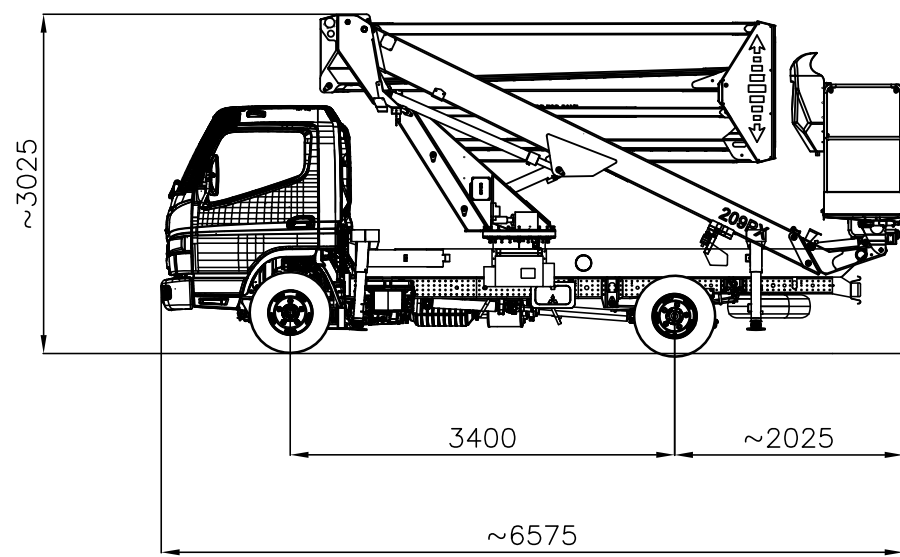
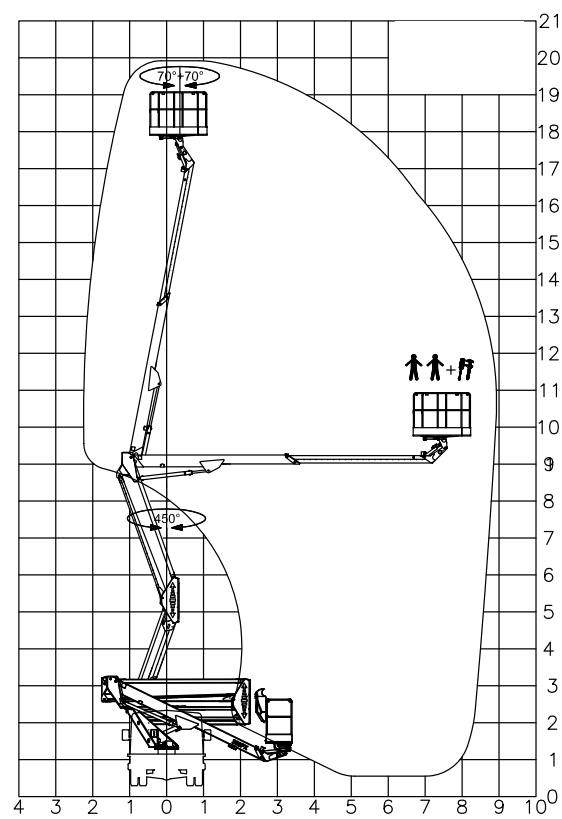








# TECHNICAL SPECIFICATIONS



<b>Max working height</b>	<b>19.90 m</b>
Max platform height	17.70 m
<b>Max horizontal reach</b>	<b>8.49 m</b>
Max. horizontal outreach to edge of basket	8.24 m
Max. rated capacity	2 persons / 220 kg
<b>Weight (approx)</b>	<b>From 4490 kg GVM (car license)</b>
Turret rotation	450°
Basket rotation	140°
Min. Transport Length	6.65 m
Min. Transport Width	2.20 m
Min. Transport height	3.00 m
Standard power source	PTO from vehicle

(All specs E&OE and subject to change)







# GET IN TOUCH

Contact **Ben Joyce** now for more information!

E: [ben.joyce@waimea.net.au](mailto:ben.joyce@waimea.net.au)

M: 0458 230 268



WAIMEA E209PX - TRUCK MOUNTED LIFTS

