



# WAIMEA E250PXJ TRUCK MOUNTED LIFT



# WAIMEA E250PXJ

**The Waimea E250PXJ truck mounted lift is a versatile 25 m telescopic knuckle truck mounted EWP with fly jib. An agile unit with great outreach.**

The Waimea E250PXJ truck mounted lift is built to accommodate 2 or 3 persons and

tools with a maximum rated capacity of 220 - 280 kg depending on the truck and outrigger configuration.

Even though the Waimea E250PXJ is compact and has a low tare weight, it can still provide 24.8 m of working height and 14 m of horizontal

outreach.

With smooth hydraulic controls, providing for a this unit provides very smooth operation and accuracy even at full height and outreach.



**24.8m**  
**WORKING HEIGHT**

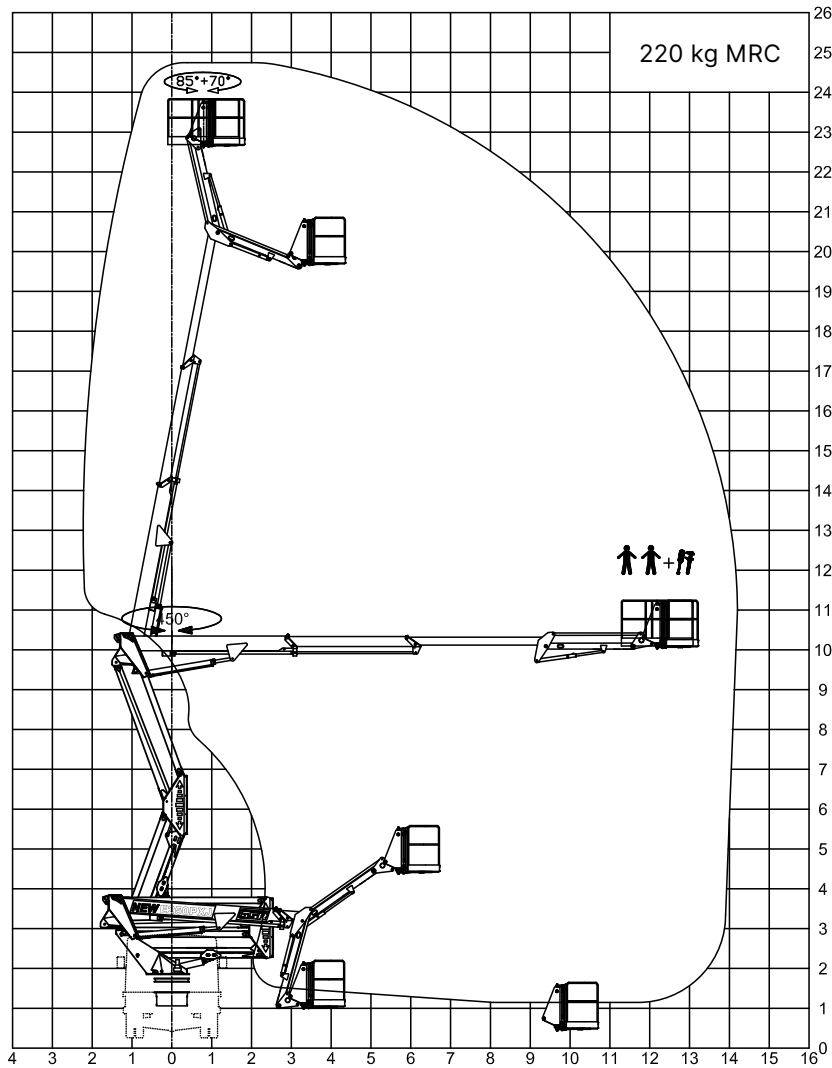




WAIMEA E250PXJ - TRUCK MOUNTED LIFTS

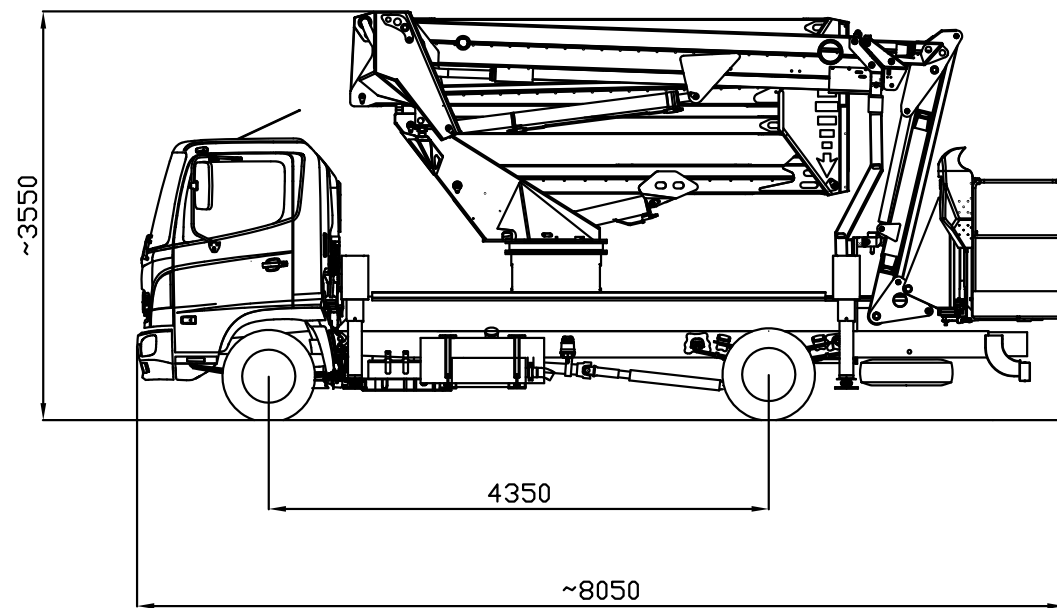


# TECHNICAL SPECIFICATIONS



<b>Max working height</b>	<b>24.8 m</b>
Max platform height	22.8 m
<b>Max horizontal reach</b>	<b>14.0 m</b>
Max. horizontal outreach to edge of basket	13.2 m
Max. rated capacity	2-3 persons / 220 - 280 kg
<b>Weight (approx)</b>	
Turret rotation	450
Basket rotation	155°
Min. Transport Length	
Min. Transport Width	
Min. Transport height	
Standard power source	PTO from vehicle

(All specs E&OE and subject to change)







# GET IN TOUCH

Contact **Ben Joyce** now for more information!

E: [ben.joyce@waimea.net.au](mailto:ben.joyce@waimea.net.au)

M: 0458 230 268

