



# C260



📞 1300 072 926

[www.rayco-australia.com](http://www.rayco-australia.com)

[www.globalmachinerysales.com.au](http://www.globalmachinerysales.com.au)

**VIC** 24-28 Williams Road Dandenong Sth. 3175 **NSW** Unit 49-50 Cassola Pl Penrith SW 2750  
**E** [vic@globalmachinerysales.com.au](mailto:vic@globalmachinerysales.com.au) **E** [nsw@globalmachinerysales.com.au](mailto:nsw@globalmachinerysales.com.au)

**QLD** 191 Magensium Dr, Crestmead QLD  
**E** [nsw@globalmachinerysales.com.au](mailto:nsw@globalmachinerysales.com.au)

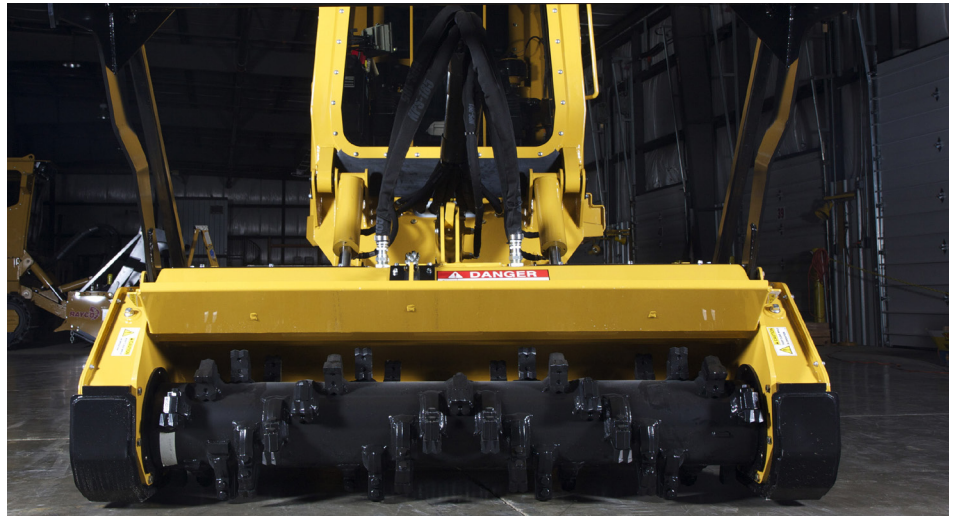


# C260

The C260 is a mid-sized mulcher that delivers 260 hp in a compact, low ground pressure package. This mulcher is suited for clearing small trees, underbrush, and a variety of unwanted vegetation across a wide range of environments. The heavy-duty steel undercarriage and powerful final drives allow operators to tackle difficult terrain with confidence. Rayco's exclusive elevated cooling design keeps engine and hydraulic temperatures within their limits in the harshest of environments. To minimise maintenance, a reversing fan can be activated from the cab to clear the limbriser debris screens. This helps to extend service intervals even when operating in hot, debris-filled environments. When manual cleaning of the debris screens is necessary, they are easily removable and the rear door opens to allow unrestricted access to the debris screen and engine radiator. The cabs are climate controlled and sealed from dust and debris to maintain operator comfort. Operators appreciate the high-backed, heated seat with adjustable armrests and air-ride suspension.

## Specifications C260

Weight	12,018kg
Length	622.3cm
Height	304cm
Width	244cm
Engine	260hp Cummins
Track Shoe	600mm Single Grouser
Mulcher Head	Predator FM260-7R
Cutting Width	196cm
Rotor Diameter	50cm
Rotor Speed	2,050rpm
Mowing Height	109cm
Teeth	46



## Features

- Powerful 260 hp Cummins QSB6.7 Diesel Engine
- Rayco-Exclusive Elevated Cooling System
- Reversing Fan for Upper Coolers
- Heavy-Duty Undercarriage
- Remote Track Tension System with Tension Monitor
- 2-Speed Ground Travel
- Hydraulic Rear Winch
- Hydraulic Cab Tilt
- Rear View Camera
- Heated Seat w/Air-Ride Suspension
- Roof-Top Escape Hatch
- High-Output LED Work Lights

📞 1300 072 926

[www.rayco-australia.com](http://www.rayco-australia.com)

[www.globalmachinerysales.com.au](http://www.globalmachinerysales.com.au)

VIC 24-28 Williams Road Dandenong Sth. 3175 NSW Unit 49-50 Cassola Pl Penrith SW 2750 QLD 191 Magensium Dr, Crestmead QLD  
E [vic@globalmachinerysales.com.au](mailto:vic@globalmachinerysales.com.au) E [nsw@globalmachinerysales.com.au](mailto:nsw@globalmachinerysales.com.au) E [nsw@globalmachinerysales.com.au](mailto:nsw@globalmachinerysales.com.au)

