



Versalift VST40 on Isuzu FRR 4x2





Versalift VST40 on Isuzu FRR 4x2



This is an ultra-versatile unit, suitable for street lighting, faults and arborist work.

Quick set up, generous storage for kit and easy access sets the stage for productivity - safely - with ease.



WAIMEA.NET.AU | 02 8610 5601





WAIMEA.NET.AU | 02 8610 5601



Versalift VST40 on Isuzu FRR 4x2

The Versalift VST40 EWP offers 14.2m work height, 9.5m horizontal reach and 227kg bucket capacity on a fully insulated 46kV, Cat C boom. It comes with four outriggers with interlock system, 600mm bucket lift and uni-lever control for multi-function with one hand.

The VST40 boom offers point and shoot functionality along with ability to go up and over obstacles. There's a hydraulic tool port at the bucket and the bucket can easily be tilted for cleaning and rescue.

The entire truck design is focused on highly efficient and safe use of the boom, with easy deck access and safety handrails all the way up to the bucket.



Build options include sign and cone holders, slide-out vice and a range for toolboxes to choose from.

The Isuzu FRR500 with a automatic transmission and 4410 wheelbase provides a tight turning circle for a nimble unit around town, and a pleasure to drive on the open road.

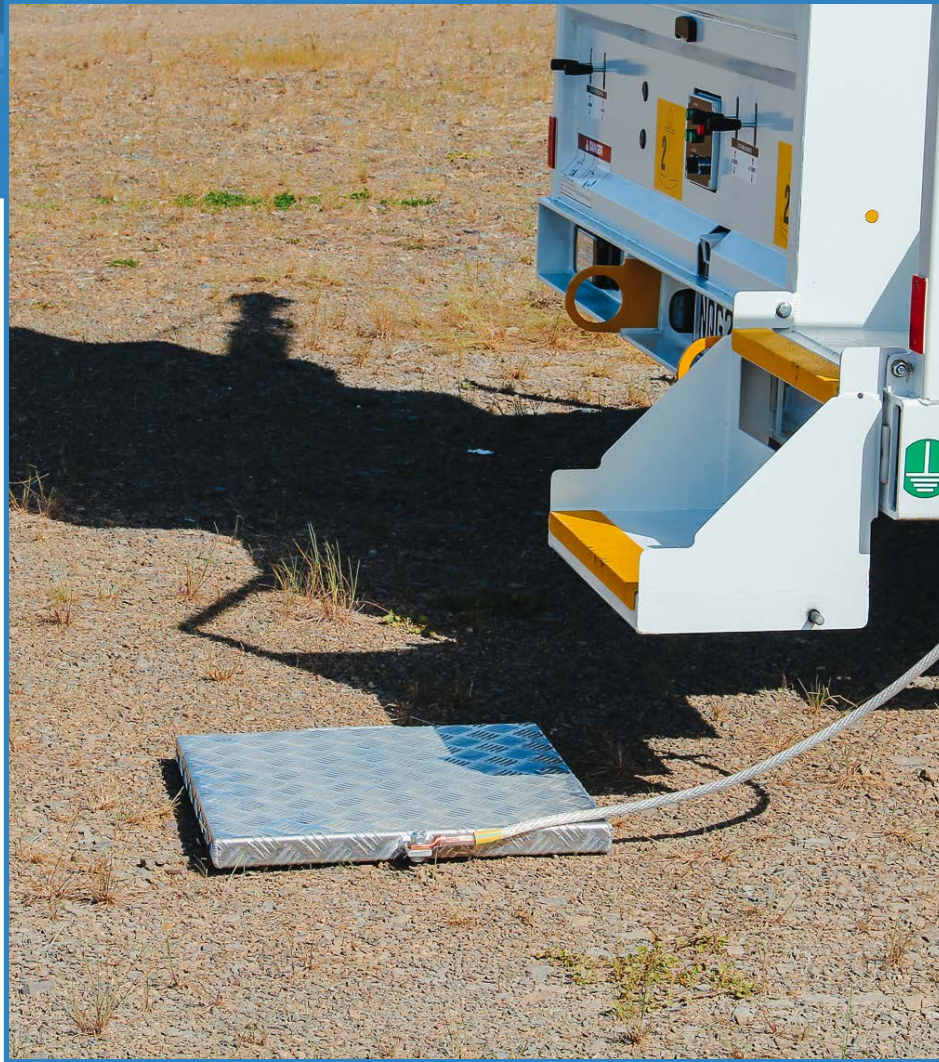


Great ground access and working envelope with minimal tail swing





Quick setup, generous storage for kit and easy access sets the stage for productivity, safely with ease.



WAIMEA.NET.AU | 02 8610 5601





Versalift VST40 on Isuzu FRR 4x2



Insulated boom with easy Unitrol upper joystick control.

Easy bucket access

LED Beacons and work lights



Large toolboxes offering huge storage space

Outrigger pad and chock holders

Easy access steps from rear

A-frame outriggers for quick deployment





SPECIFICATIONS



EWP Specifications	
EWP Manufacturer	Versalift
Model	VST 40
Working Height	14.2m
Height (ground to bucket floor)	12.2m
Working Radius	9.5m
Insulation	C (46Kv)
Boom Style	Articulating/Telescopic
Boom Section	1 Section
Boom Slew Rotation	Continuous
Bucket Rotation	Yes
Bucket Rotation Powered	Hydraulic
Bucket Capacity SWL	272
Bucket Dimensions (LxWxH)	1070x610x1100
Control Type	Hydraulic
Bucket Lift Slide	500mm
Hydraulic Tool Port At Bucket	Yes
PTO Flow (LPM) @ 900RPM	23
PTO Pressure (BAR)	201
Truck Specifications	
Model	FRR500
Specifications	4x2
HP	205
Transmission	AMT Auto

Trailer Weights & Dimensions	
GVM (kg)	10,700
GCM (kg)	16,000
Front Axle Max. (kg)	4,100
Rear Axle Max. (kg)	7,700
Kerb Mass Front Axle (kg)	3,600
Kerb Mass Rear Axle (kg)	4,060
Kerb Mass Total (kg)	7,660
Payload Max. (kg)	3,040
Length (mm)	6,645
Wheelbase (mm)	4,410
Height (mm)	3,060
Width (mm)	2,300





SPECIFICATIONS



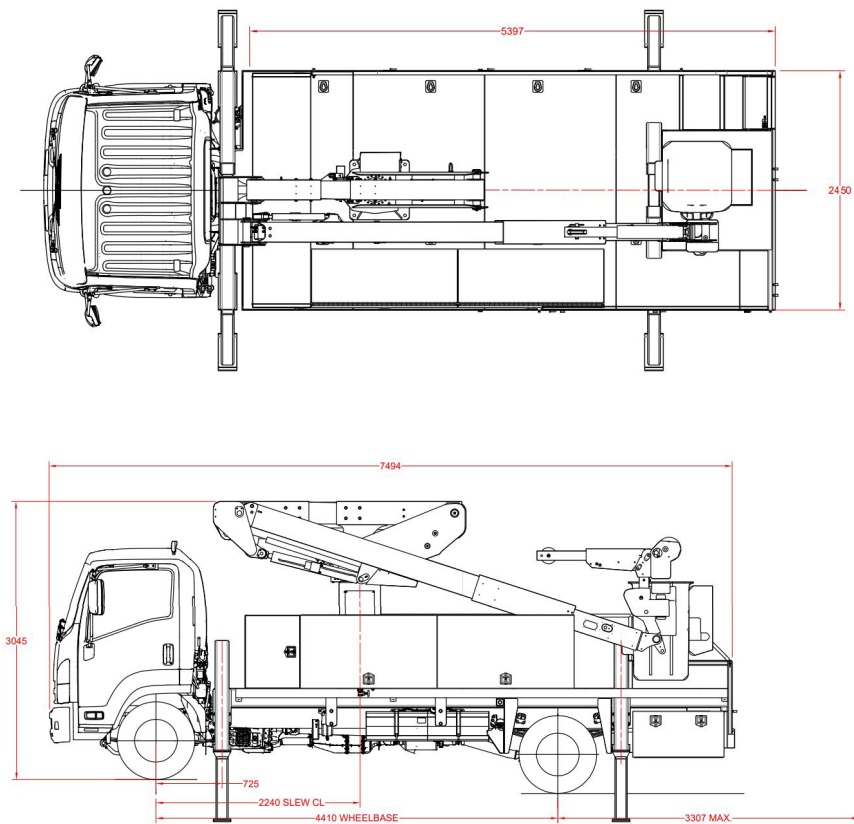
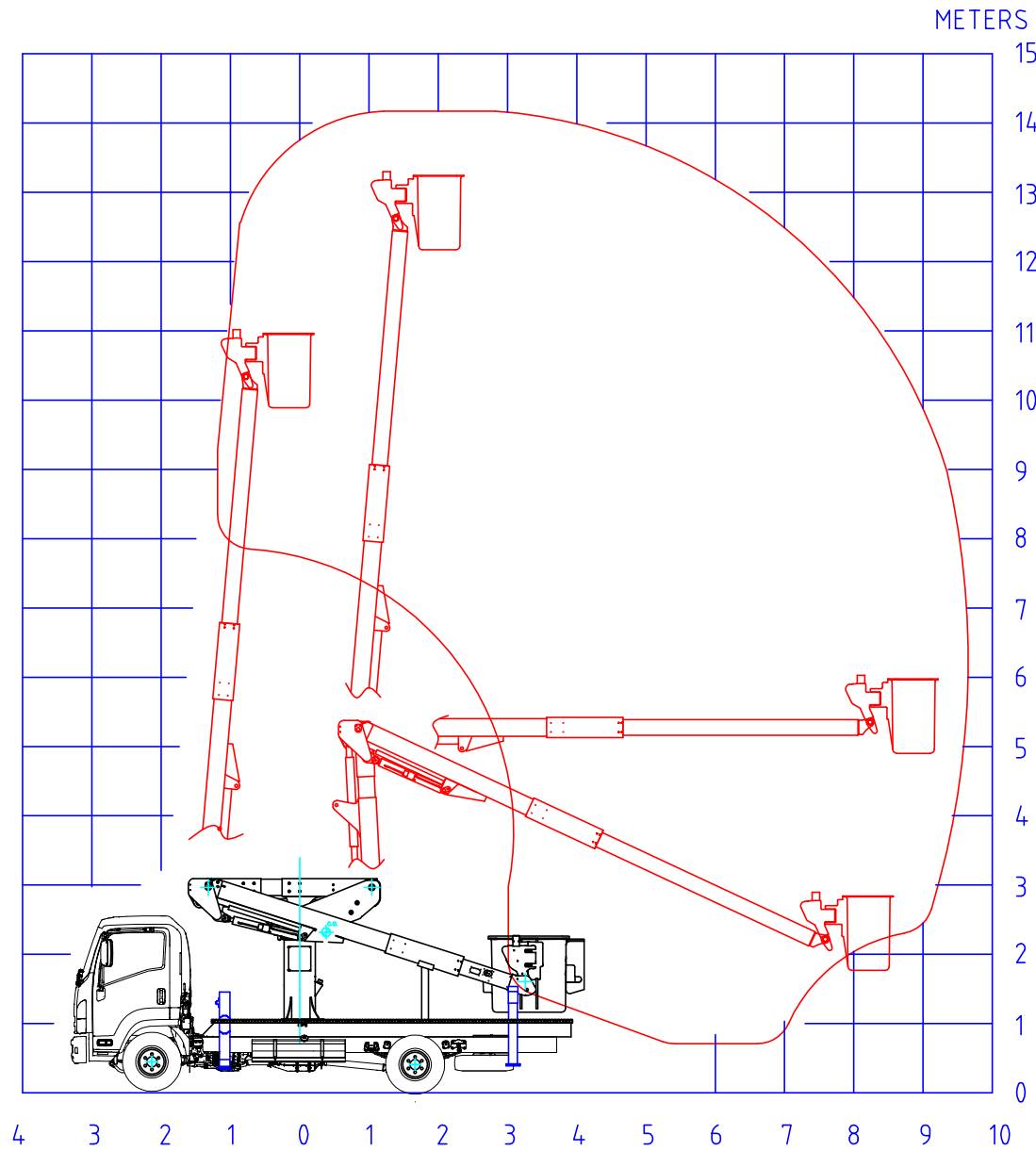
Towing:	O=Option S=Standard
Traction tyres on rear	○
Ferry tie points	○
Recovery tow eyes. Rated.	○
3500kg - Tow Bar with 1 7/8" at height 600 (mm)	○
3500kg - Tow Bar with 50mm at height 600 (mm)	○
Flat plug	○
Round plug	○
Accessories:	
Outrigger pads 400X400x40mm w/ indent	S
Wheel chocks std (Pair). 260mm long x 160mm wide	S
Hand wash Water tank	○
Earth set.9m 35mm ² clear cover flexi cable, 2x clamps 1m earth rod. Tested	○
Vice - Slide out LH side	○
QRC Air coupling from aux air tank, mounted by outrigger on LH side	○
Lighting/Electrical:	
LED Flashing beacon light Amber	S
(4x)Front and rear amber flashers	S
Remote controlled work light	○
(2x)LED work light	S
Tool box strip lighting	○
Nightlight	S
Inverter – 1000W, DC, 24V, DC-AC Pure Sine	○
Inverter – 2500W Pure sine, 24V	○
Battery Isolator switch	○

Hydraulic Tool Options	O=Option S=Standard
Oil cooler	○
Hyd Pole saw	○
Miscellaneous	
Cab protection cage	○
Tool Boxes	
Chief III box 800Wx1500Hx600D Steel, w/ single door. lockable.	1x
Chief III toolbox. Shelf.	2x
Chief VII box 600Wx800Hx2400D Steel, w/ 2x doors. lockable.	2x
Chief VII toolbox. Shelf.	1x
Box 600Wx800Hx2100D Steel, w/ single door. lockable.	○
Holders	
Long Reach Chain Saw Holder w/ Handle, Strap & Ratchet - Fairmont	○
Fibreglass Chainsaw Scabbard w/ Adjustable Lip, Removeable Liner	○
Replacement Liner for 24-18L Holder	○
Bucket Mount Long Reach Chainsaw Holder	○





RANGE DIAGRAM





OUR ECOSYSTEM OF SUPPORT



TURNKEY BUILD

A turnkey design and build means we take total responsibility for all elements of a unique build.

From order through to delivering a fit for purpose specialist truck that immediately gets to work in your business. This process involves many years' experience in weight ratios, stability certification, compliance and actual hands-on knowledge of how these specialist trucks are used in the field and the ergonomics involved in a build. As approved distributors for the world leading global brands, we source specialist units direct from the factory and build onto NZ chassis' with all elements of the build being conducted from our own skilled inhouse resources.



HIRE OR RENTAL

Waimea Group realise the challenges our customers face.

In fluctuating workloads and short-term contracts being awarded, the core need of every project demanding specialist trucks and equipment still exists. Our hire fleet makes available on-demand basis ensuring you have the resource to scale up or down for workload without creating fixed overhead cost to your business. Our hire units are ideal testing ground to 'try before you buy' and ensure that you have had actual experience with equipment before making a significant capital investment.



LEASE

Fleet leasing is a well-established way of operating a vehicle fleet

Whether you're a small contractor or larger organisation, leasing rather than buying assets outright enables you to expand your fleet without significantly affecting cash flow or compromising on the specification of the vehicle.



MAINTENANCE

Our 365 Performance Plan is a key pillar in our vision of the utility industry operating with zero vehicle downtime.

The 365 Performance Plan is based around what is preventative versus corrective maintenance. The elimination of unplanned downtime and long-term reliability can only come from advanced planning, trained service technicians, availability of parts and first-call fix rates. *Read more about our 365 Performance Plan on the next page.*



REBUILD & REFURB

We recognise that not all operators want to purchase new and a key part of getting the best out of a used asset is refurbishment.

Our dedicated service team have years of experience in undertaking refurbishments of specialist units. Through our inhouse expertise including our people, skills, equipment and spare parts stock we can bring used equipment up to a compliant and certified standard that enables them to deliver continued performance for the next stage of their life.



APPROVED USED

Our hire fleet made available for purchase as 'approved used'

This creates opportunities for those with commercial budgets or contracts that can't attain to new build investments. With over 120 specialist trucks across our rental fleet, we'll have a specification and budget to match your business.





365 Performance Plan



OUR SERVICE MAINTENANCE PLAN

Our 365 Performance Plan is a key pillar in our vision of the utility industry operating with zero vehicle downtime. The 365 Performance Plan is based around what is preventative versus what is corrective maintenance. The elimination of unplanned downtime and long-term reliability can only come from advanced planning, trained service technicians, availability of parts and first-call fix rates. Our customer service team takes direct responsibility for these factors so you can rely on us for vehicle productivity right through its lifecycle.

A typical inspection on a bucket truck covers every point on the unit including filters, lubrication, and critical fastener torque procedures, as well as a visual inspection for cracks and general wear and tear. The technician will also perform an operational calibration test and adjustment to check for unit ease of operation and correct speed.

Our system keeps an electronic record of your service dates and specific details of your E.W.P maintenance ensuring that from both a fleet management and health and safety perspective, the asset is compliant with current legislation and its future residual value is always being protected.

We understand that to achieve the highest levels of equipment performance and reliability, you need to have a system in place. A maintained service plan from Waimea Group ensures that your asset investment is generating maximum return and optimisation with performance in year five the same as it was in year one.

We bring manufacturers knowledge and expertise right to your vehicle wherever you are and take responsibility for the routine of those inspections and services. Put simply, you focus on your business outcomes and we allow you to take for granted the maximum vehicle productivity.

SERVICE INCLUSIONS

- **EWP INSPECTION** – Inspection and test of every point on the unit
- **EWP SERVICE** – Full service supported by online portal for tracking and records. Opportunity for operator training as required.
- **WARRANTY** – Warranty extension to 24-months from new
- **DISBURSEMENTS & COSTS** – Includes labour, travel costs and reports
- **BRANDS** – Available on all Versalift, Donghae and CTE booms
- **TECHNICAL SUPPORT** – 24/7 phone support for operators in the field
- **PARTS** – Includes service consumable parts i.e. filters. Wearing parts sourcing can be done in advance of the machine's requirement to minimize cost and future downtime.
- **TRAINING** – Refresher training from technician whilst onsite



GET IN TOUCH

WAIMEA.NET.AU | 02 8610 5601



WAIMEA.NET.AU | 02 8610 5601

