

monitor LiFTS

SYDNEY MELBOURNE BRISBANE TAMWORTH

monitor.net.au • 1800 025 024



MONITOR RR9 RAIL BOOM LIFT



MONITOR RR9/200

This light aerial platform is designed to make elevated railway maintenance effortless. The Monitor RR9/200 is an economical easy to transport machine for use on both rail and terrain.

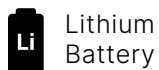
Developed by Platform Basket, the Monitor RR9/200 has a hydraulically-controlled drive system that enables the positioning of the machine from tracks to railway wheels in no time!

Weighing in at just 3 t, the Monitor RR9 is capable of working on railways providing up to 9.5m working height, 4.7m horizontal outreach and a load capacity of 200kg.

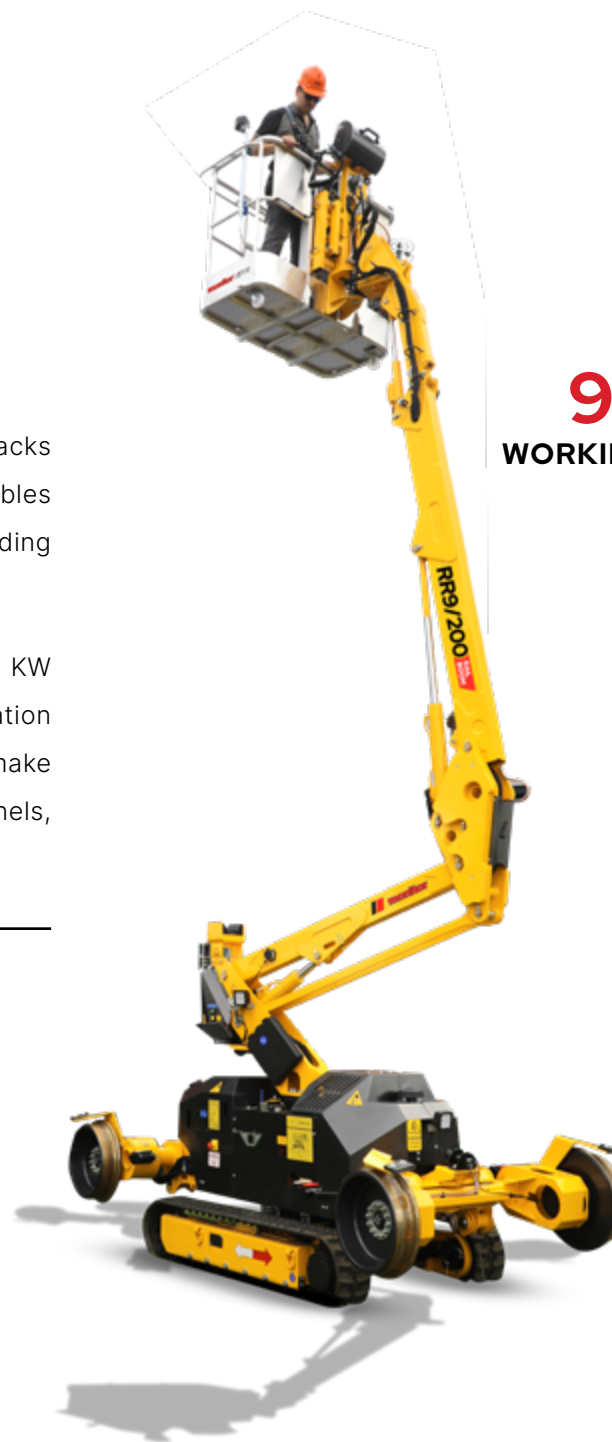
The hydraulic rotation of the tracks perpendicular to the 2 railway bogies enables easy access to the railway without needing special alignment manoeuvres.

The Monitor RR9 is powered by a 10.5 KW diesel engine, or fully electric operation with lithium-ion batteries in order to make the equipment suitable for use in tunnels, subways and indoors.

OPTIONAL ADD-ONS:



Lithium
Battery

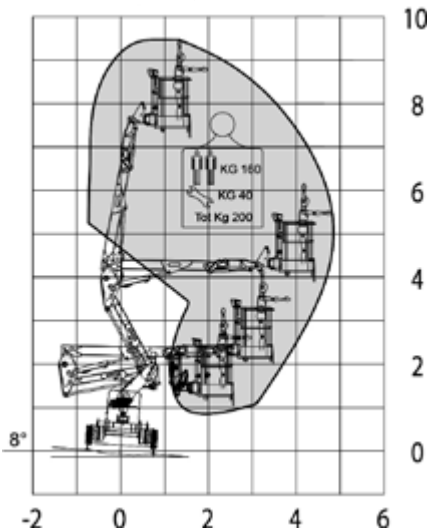


9.5m
WORKING HEIGHT

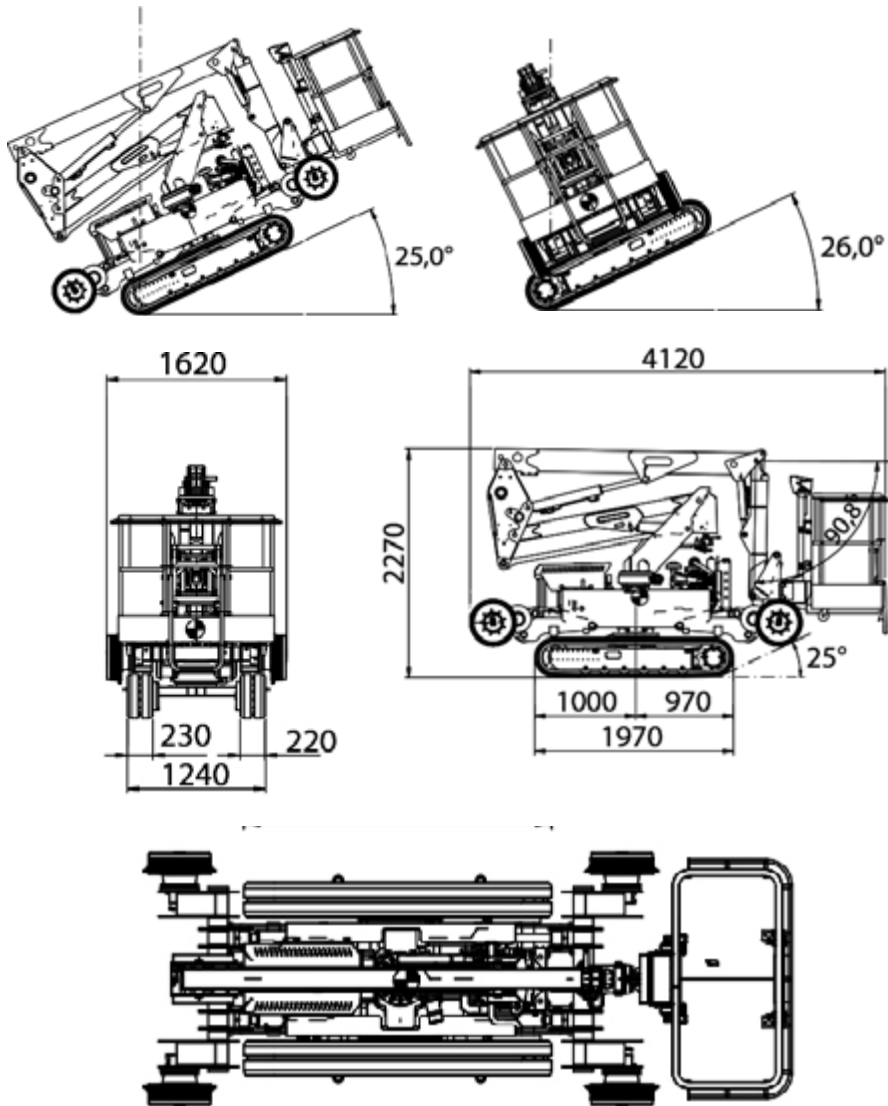
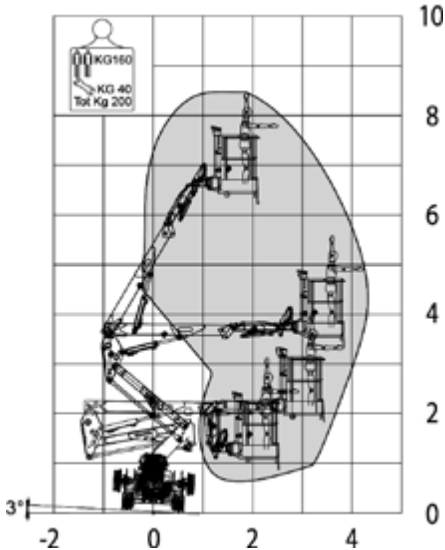


TECHNICAL SPECIFICATIONS

On the railway diagram



On the road on tracks diagram



Max working height	9.5 m
Max working height in narrow set	7.5 m
Max horizontal outreach	4.7 m
Max. rated capacity	2 persons / 200 kg
Weight (approx)	2900 kg
Turret rotation	360°
Basket rotation	deg 70° + 70°
Ground pressure driving (approx)	kN/m2
Traffic load (live load) travelling	kN/m2
Auto levelling turret	Std
Gradeability lengthwise	
Gradeability sideways	
Standard power source	Diesel Kubota
Optional power source	Lithium Batteries
Tri-gauge	
Drive Speed	Rail 10 km/h (Road 2 km/h)
Electric emergency lowering	Std

(All specs E&OE and subject to change)

Note: Specifications vary between models as well as with rail gauge changes. For more detailed information on the RR9/200, please contact Monitor Lifts.



OPTIONAL ACCESSORIES

Lithium Battery

With a more efficient technology that is environment friendly with the reduction of noise and emissions, and increased safety. It boasts a fully electric solution that enables it to be used in any situation—including operating inside a tunnel—with low noise, and no emissions.



GET IN TOUCH

You may contact us at monitor.net.au, or call us via our toll-free number at 1800 025 024.

